

Previously released versions: 5.1.106

SiteArchitect: Integration of Google Chrome

Google Chrome has been integrated in FirstSpirit version 5.1.209 and can now be used for the integrated preview, even on Mac OS.

To do so, the “Activate browser engine” option must be activated for the relevant project via the ServerManager in the project properties under “Client applications / Browser” engine.

- If the “individually adjustable” option is also selected, the use of Google Chrome in the relevant SiteArchitect can be activated via the “View / Browser engine / Google Chrome (BETA) menu” (see figure).
- The use of Google Chrome for the integrated preview is preset for the users in the relevant project via the “fixed definition” option in conjunction with the “Google Chrome (BETA)” value. Subsequently, the users are not able to make a selection for the relevant project.

Known restrictions:

- The integration of Chrome is based on a special application and does not use **any** existing, locally installed version of Google Chrome, or any user data that is used for this purpose. No automatic updates are carried out either.
- No **plug-ins** can be installed (e.g., Adobe PDF plug-in for displaying PDFs, Adobe Flash Player plug-in for displaying Flash files). This also means, for example, that no help PDF files can be displayed either (“Help / Users (SiteArchitect)”, “Help / Users (ContentCreator)”, and “Help / Administrators” menu items).

For more information, see also *FirstSpirit documentation for administrators*, “Browser engine” chapter, and *FirstSpirit SiteArchitect documentation*, “View” chapter.

The integration of Google Chrome is currently in the BETA test phase and has not yet been officially released.

fs-wrapper.conf: File access rights using the umask parameter

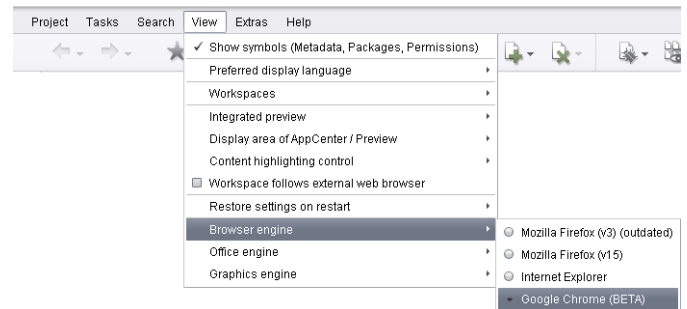
Using the **wrapper.umask** parameter in the configuration file for the server start and the FirstSpirit server Java system *fs-wrapper.conf*, access rights can be configured under UNIX (see http://en.wikipedia.org/wiki/Filesystem_permissions#Traditional_Unix_permissions) for newly created files and directories.

The default value for the parameter has been changed from *0022* to *0027*.

```
wrapper.umask=0027
```

To date, the write permission of the “Group” and “Others” user classes has been removed through the rights mask (“umask”). As a result of the change, the read and execute permissions are also removed for the “Others” user class. The “Others” user class therefore no longer has any rights.

For security reasons, this parameter should be set to “0027” in all existing FirstSpirit installations.

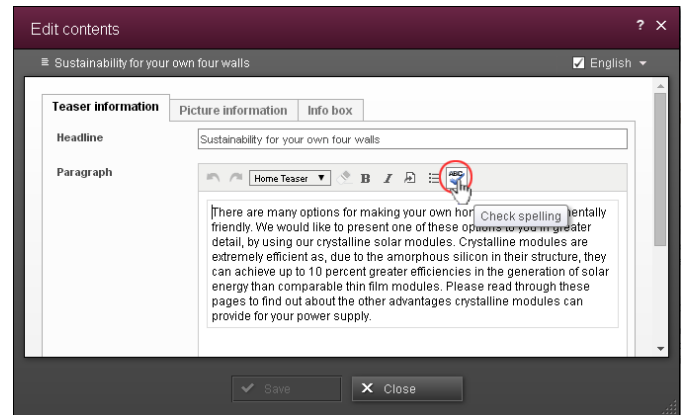


Enhancements in ContentCreator

Spell check activated by default

The spell check can be used in both SiteArchitect and ContentCreator to check the text entered in the rich text editor (CMS_INPUT_DOM) and in tables (CMS_INPUT_DOMTABLE) for spelling mistakes using a glossary, so long as this function is activated for the project.

As of FirstSpirit version 5.1.209, the check mode in ContentCreator is activated by default. It can be switched off via the “Check spelling” icon (see figure). The setting applies project-wide for all rich text editors and tables.



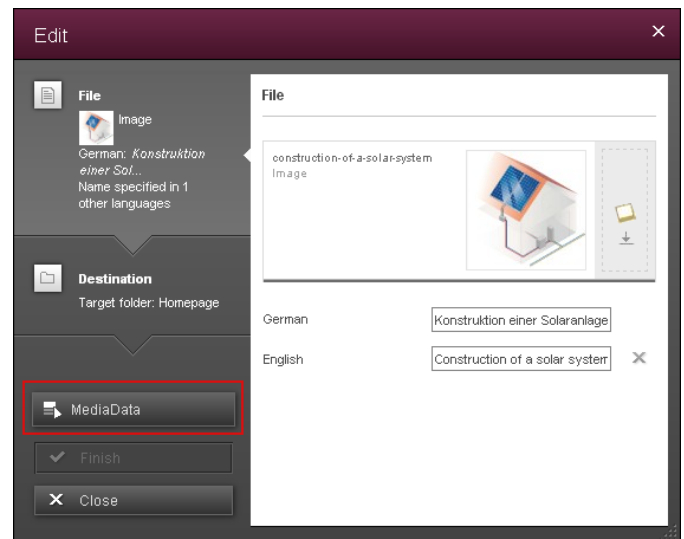
Simplified editing of Media metadata

ContentCreator provides functionality to assign metadata on Media elements.

For media that are to be uploaded, this takes place directly in the media upload dialog (menu “Media / New – Upload new medium”).

For existing media elements, metadata can now be assigned or modified using the media editing dialog (menu “Media / Edit”, see figure). Previously, it was necessary to use the search functionality in the report bar.

See also “FirstSpirit Manual for editors (ContentCreator)”, “Menu functions / Media area / Editing a medium”.



Snippets: Specifying the language

A brief view (“Teaser”) can be specified for some FirstSpirit object types (e.g., sections and datasets) using the definition for what are known as “Snippets”.

The following syntax can be used to specify a particular language to be used for the display of snippets:

```
#form.<name_of_the_component>.<language_code>
```

Here, the placeholder *<name_of_the_component>* is the variable name for the required input component whose content is to be used for outputting the snippet.

<language_code> is the abbreviation of the required language that has been defined in ServerManager in the server properties under “Language templates”. Furthermore, *#master* can be used for the project master language.

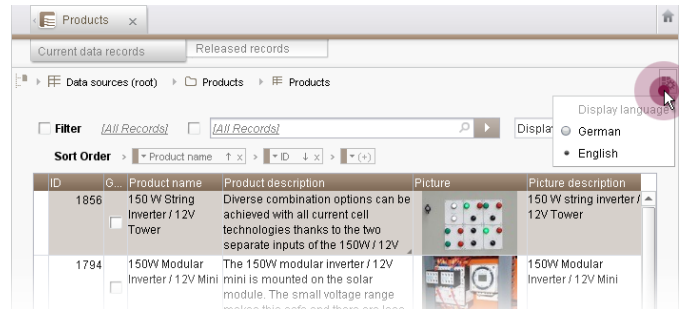
In the event of any subsequent project downgrading (e.g., export to version 5.1.106 of FirstSpirit server), a language defined in version 5.1.209 is retained and should be removed manually, as an unwanted snippet output may occur if the FirstSpirit version in question does not support this language specification.

For more information on snippets, see *FirstSpirit online documentation*, “Template development / Snippets”.

SiteArchitect: Selecting the display language for data source view

The language in which the datasets are to be displayed in the overview table can now be set in the overview of data sources. This is done using an icon on the right edge of the workspace for a data source (see figure).

You can make a selection from the available project languages. The setting is saved for the relevant project.



"External synchronization" enhancements

External synchronization permissions

To run the "External synchronization" function in SiteArchitect, the corresponding user must either:

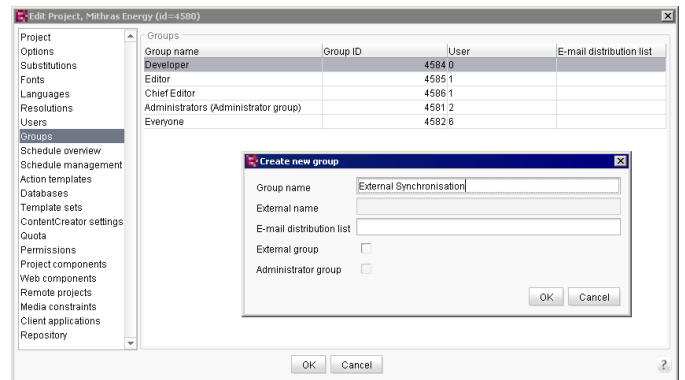
- be a member of the "External Synchronisation" group (see figure)

or

- have "Change" permission for the Template Store root node if the "External Synchronisation" group is not available in the project.

The "External Synchronisation" group is created in the project properties in ServerManager in the "Groups" area, and the users who should be permitted to run external synchronization are added to this group.

Regardless of the association with the "External Synchronisation" group, the user permissions relevant for the action to be performed (read, change, create) are required.



Assigning revision comments

Using the newly introduced "setRevisionComment(String)" method of the "ImportOperation" interface (FirstSpirit Developer API, "de.espirit.firstspirit.store.access.nextport.operations" package), you have the option to assign your own revision comments for imported elements.

CMS_INPUT_IMAGE_MAP: Access via FirstSpirit Access API

FirstSpirit supports creation of link-sensitive images ("ImageMaps"). A link-sensitive image possesses one or more areas which can be activated using an input device (e.g. mouse or trackball). When an area is activated using such an input device, the link associated with the area is triggered.

To maintain link-sensitive images, FirstSpirit supplies the input component CMS_INPUT_IMAGE_MAP. This input component returns an object of data type *MappingMedium*.

Starting with FirstSpirit version 5.1.209, it is possible to access individual link-sensitive areas of an ImageMap using the FirstSpirit Access API.

The method "getAreas()" of the interface "MappingMedium" returns all areas defined for a link-sensitive image.

The return object of this method is a *List of Area* objects (*List<Area>*).

Because individual areas can have one of three distinct shapes (rectangle, circle, or polygon), the package "de.espirit.firstspirit.access.editor.value.imagemap" includes a separate interface for each shape:

- Rectangle: FirstSpirit Access API, interface *RectArea*
- Circle: FirstSpirit Access API, interface *CircleArea*
- Polygon: FirstSpirit Access API, interface *PolyArea*

Aside from the opportunity to access areas via the FirstSpirit Access API, the shape and associated coordinates of the area can be output during generation. Towards this end, the data type *Area* provides the methods "getShape()" and "getCoordinates()". For further information about this data type, see the chapter "Template development / Template syntax / Data types / Area" in FirstSpirit Online Documentation.

Any scripts, modules, etc. which previously used non-public methods and interface to access ImageMap data should be tested and modified accordingly.

To output ImageMaps in templates using the methods "getShape()" and "getCoordinates()", no adjustments are necessary.

For more information see FirstSpirit Online Documentation,:

- "Template development / Forms / Input components / IMAGE_MAP"
- "Template development / Data types / Area"
- "Template development / Data types / MappingMedium"
- "Templates (basics) / Composition of templates / Link templates / Examples / Imagemap links"

New code signing certificate

The content of FirstSpirit JAR files is signed with a certificate. This procedure is also called "code signing".

In the current FirstSpirit version, the content is signed with a new certificate that is valid until 06-13-2016.

"Advanced URL Creator" enhancements

New "useLowercase" parameter

In Windows, it does not matter whether upper or lower case is used for files and folders, i.e., the folders "abc", "Abc", and "ABC" are the same folder.

By contrast, for Unix file systems, upper and lower case are distinguishing features for files and folders. Therefore, this may lead to conflicts if the files are generated in Linux and then transferred to a Windows system, for example.

You can influence whether upper or lower case is used when files and folders are generated using the "useLowercase" parameter:

If the parameter is transferred with the value "false", the upper/lower case of display names in the project is taken into account when advanced URLs are generated. This is the default behavior.

If the parameter is transferred with the value "true", lower case is used for file and folder name generation.

Example:

A project contains two structure folders (menu levels) with the display names "Folder" and "folder". If generated with the value "false" for "useLowercase", the following advanced URLs are formed:

```
/folder/index.html
/Folder/index.html
```

If generated with the value "true" for "useLowercase", the following advanced URLs are formed:

```
/folder/index.html
/folder/index-2.html
```

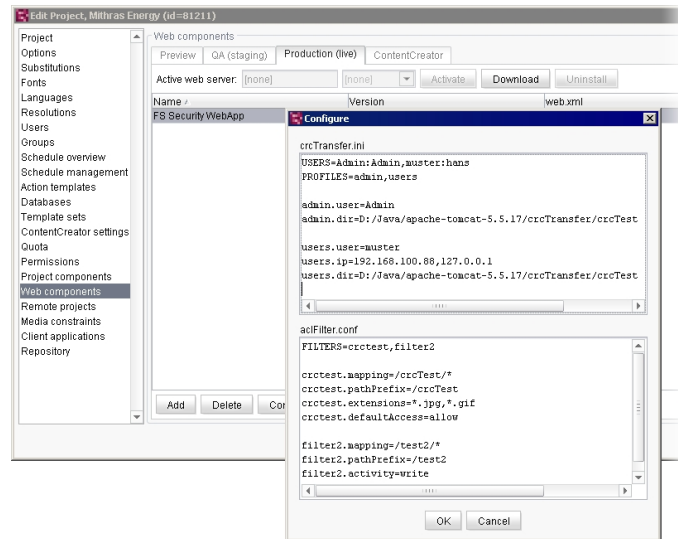
FirstSpirit "Security" module and Advanced URL Creator

The multi-access control filter can be used to protect the content of FirstSpirit projects. Configuration is carried out using the *aclFilter.conf* file. There is a corresponding configuration dialog in the project properties in ServerManager under "Web components" (see figure).

Using the new **welcomeFiles** parameter, the module can be adapted to the use of the module in conjunction with the Advanced URL Creator:

By default, the Advanced URL Creator is configured in such a way that the "/index.*)" file extension in the URLs is suppressed ("Welcome-Filenames"). By contrast, files with the "/index.*)" file extension are generated in the file system and in the Access Control database used by the Security module. In this case, the **welcomeFiles** parameter should be specified and the required file extension(s) entered as the value(s), for example:

```
FILTERNAME.welcomeFiles=index.html,index.jsp
```



New functionalities

ID	Role	Category	Sub Category	Description
155161	All Users	ContentCreator (WebClient)	Spell Checker	The activation and deactivation of the spell check in ContentCreator has been optimized. More information can be found in the introduction (under "ContentCreator: Spell check activated by default").
151377	All Users	SiteArchitect (JavaClient)	Content Store	The display language for the datasets in the overview table can be set in the overview of data sources. More information can be found in the introduction (under "SiteArchitect: Select display language for data source view").
153315	Developer	SiteArchitect (JavaClient)	External synchronization	Using the new "setRevisionComment(String)" method of the "ImportOperation" interface (Developer API, "de.espirit.firstspirit.store.access.export.operations" package), you have the option to assign your own comments for imported elements (see "External synchronization").
152079	Developer	SiteArchitect (JavaClient)	Scripting	Using the "CircleArea", "PolyArea", and "RectArea" interfaces, (Access API, "de.espirit.firstspirit.access.editor.value.imagemap" package), it is now possible to access the CMS_INPUT_IMAGEMAP input component areas. More information can be found in the introduction (under "CMS_INPUT_IMAGEMAP: Access via FirstSpirit Access API").
151394	Developer	SiteArchitect (JavaClient)	Templates	A language can now be specified when defining snippets. More information can be found in the introduction (under "Snippets: Specify language").

ID	Role	Category	Sub Category	Description
156891	FirstSpirit Administrator	Administration	None	In the current FirstSpirit version, the content is signed with a new certificate. More information can be found in the introduction (under "New code signing certificate").

Bug-fixes

ID	Role	Category	Sub Category	Description
155046	All Users	Administration	License	The value for the "URL" parameter in fs-server.conf can now be changed while the system is running if the server license was delivered with a fixed IP address.
155699	All Users	Administration	Security	Security improvements for the FirstSpirit start page.
156550	All Users	Administration	Security	Security improvements for Quickstart entries (FirstSpirit start page).
153094	All Users	ContentCreator (WebClient)	Dynamic Forms	When passing several parameters using EVENT rules ("Dynamic Forms") to a query via the input component CMS_INPUT_COMBOBOX, not all parameters were processed.
155956	All Users	ContentCreator (WebClient)	Dynamic Forms	In the FS_LIST input component, rule evaluation in subforms has been optimized.
152760	All Users	ContentCreator (WebClient)	Input Components	In the CMS_INPUT_DOM input component, the "Undo" and "Redo" commands have been improved.
153789	All Users	ContentCreator (WebClient)	Input Components	The "Hide in selection list" option can be selected in link templates. In the interim period, the FS_LIST input component did not take this option into account in the selection dialog box.
155496	All Users	ContentCreator (WebClient)	Input Components	In the CMS_INPUT_DATE input component, the "preset" parameter with "created" and "modified" values was not taken into account in ContentCreator.
119335	All Users	ContentCreator (WebClient)	Media Store	Editing Media metadata in ContentCreator has been improved. For further information, please refer to the introduction (section "Simplified editing of Media metadata").
154245	All Users	ContentCreator (WebClient)	Media Store	When uploading various media to a new folder, an individual folder was generated for each medium by mistake.
154251	All Users	ContentCreator (WebClient)	Media Store	The folders are now displayed in ascending alphabetical order in the dialog box for uploading a medium.
154254	All Users	ContentCreator (WebClient)	Media Store	The "Upload new medium" dialog box has been improved.
158223	All Users	ContentCreator (WebClient)	None	In ContentCreator, logging out could lead to an error.
156067	All Users	ContentCreator (WebClient)	Search	By activating the "My elements" option for the search function in the Report area, the search result can be restricted to elements that have been created or modified by the currently logged-in user. The way in which the list of results is refreshed when using this option has been optimized.
156187	All Users	ContentCreator (WebClient)	Security	Security improvements for the search function in ContentCreator documentation.
156188	All Users	ContentCreator (WebClient)	Security	Security improvements for the ContentCreator help.
157623	All Users	ContentCreator (WebClient)	Security	
155169	All Users	ContentCreator (WebClient)	Workflow	The sending of e-mails can be configured in a workflow. If the "%WEBeditURL%" parameter is specified, the edited page can be opened directly in ContentCreator. This link now also works if the "Site-store based" value has been assigned to the "Element Status Provider" option.
156510	All Users	Homepage	Security	Security improvements for the FirstSpirit start page.
156536	All Users	Homepage	Security	Security improvements for the FirstSpirit start page.
156554	All Users	Homepage	Security	Security improvements for connection settings (FirstSpirit start page).
156623	All Users	Homepage	Security	Security improvements for the FirstSpirit start page.
151319	All Users	SiteArchitect (JavaClient)	All Stores	When display names were renamed and then saved, the display name entered for an editorial language would sometimes be ignored unless it was one of the project languages.
152032	All Users	SiteArchitect (JavaClient)	All Stores	In FirstSpirit, the drag-and-drop function in text components has been improved.
156346	All Users	SiteArchitect (JavaClient)	All Stores	The evaluation of rights in snippets has been optimized.
157675	All Users	SiteArchitect (JavaClient)	All Stores	In ServerManager, a project logo can be assigned in a project's properties. SiteArchitect now correctly displays this logo again.
154361	All Users	SiteArchitect (JavaClient)	Content Store	For data sources with large volumes of data, the display could be slowed down to some extent when displaying a brief overview.
154468	All Users	SiteArchitect (JavaClient)	Content Store	The performance when scrolling through tables with several datasets that simultaneously contain relations to other datasets has been improved.
154807	All Users	SiteArchitect (JavaClient)	Content Store	When releasing datasets, the release status was not refreshed in the status bar by mistake.
154846	All Users	SiteArchitect (JavaClient)	Content Store	When selecting a sorting criterion in the brief overview for a data source, an error could occur if at least one column was not assigned to any input component.
155048	All Users	SiteArchitect (JavaClient)	Content Store	In very rare cases, an error could occur when sorting special foreign key columns in the Data Store.
155772	All Users	SiteArchitect (JavaClient)	Content Store	In very rare cases, an error could occur when querying a DB2 database.
150638	All Users	SiteArchitect (JavaClient)	Corporate Content	In "CorporateContent" functionality, loading of larger content packages has been accelerated considerably. Additionally, the method "getElements(Collection<Long>)" has been added to the interface "Store" (Access API, package "de.espirit.firstspirit.access.store").
156707	All Users	SiteArchitect (JavaClient)	Corporate Content	The "CorporateContent" function checks the correctness of the data during import. There can sometimes be a reference name conflict between an object in the subscription and an object in the target project. If these objects belong to different object types, a warning is now written to the log file instead of an error.
155747	All Users	SiteArchitect (JavaClient)	Dom Editor	On the Mac OS X operating system, use of the key combinations in the CMS_INPUT_DOM input component has been improved.
152209	All Users	SiteArchitect (JavaClient)	Export / Import	Export/import of media with preview images has been optimized.
153745	All Users	SiteArchitect (JavaClient)	External synchronization	During external synchronization, in rare cases, there could be an ID conflict during import.
155084	All Users	SiteArchitect (JavaClient)	External synchronization	The authorization check in external synchronization has been improved.
153624	All Users	SiteArchitect (JavaClient)	Input Components	In the FS_LIST input component, the display of the cursor in the overview has been improved.

ID	Role	Category	Sub Category	Description
153970	All Users	SiteArchitect (JavaClient)	Input Components	Images from the Media Store can be selected within the input component FS_LIST (DATABASE type) in the gallery mode (tag MEDIAMODE). The display of the selection area in the selection dialog has been optimized for the selection of larger quantities of images.
154195	All Users	SiteArchitect (JavaClient)	Input Components	In the FS_REFERENCE input component, the message has been optimized if a referenced element has been deleted in the interim period.
154826	All Users	SiteArchitect (JavaClient)	Input Components	In the FS_LIST (DATABASE type) input component, the datasets to be selected and the sorting thereof can be specified with a query. Unfortunately, in the interim period, the results could not be further restricted in the selection dialog box by means of search and filter actions.
154866	All Users	SiteArchitect (JavaClient)	Input Components	In the CMS_INPUT_DOM and CMS_INPUT_DOMTABLE input components, the activation/deactivation of formatting actions has been optimized.
154959	All Users	SiteArchitect (JavaClient)	Input Components	Texts from a web site can be inserted per drag and drop into the input component CMS_INPUT_TEXTAREA in FirstSpirit. HTML tags have been taken over by mistake too.
155075	All Users	SiteArchitect (JavaClient)	Input Components	The rule evaluation for inner elements of the FS_LIST input component (DATABASE type) has been optimized.
155683	All Users	SiteArchitect (JavaClient)	Input Components	Retrieval values in the cell properties dialog of inline tables were by mistake not taken into account within the input component CMS_INPUT_DOM.
156244	All Users	SiteArchitect (JavaClient)	Input Components	The CMS_INPUT_IMAGEMAP input component can be used to embed links at various locations in a selected background image. A map area object is generated for each link first. The positioning of these map area objects has been optimized for images with a low height.
157502	All Users	SiteArchitect (JavaClient)	Input Components	In the input component FS_LIST, using the parameter "expand-behaviour" in conjunction with the value "EXPAND_FIRST" could lead to an error.
152488	All Users	SiteArchitect (JavaClient)	Media Store	When dragging and dropping a file from the file system to an existing language-dependent medium, the required language tab was inactive.
155118	All Users	SiteArchitect (JavaClient)	Media Store	In the Media Store, the display of tooltips in the folder overview has been improved.
155843	All Users	SiteArchitect (JavaClient)	Media Store	In FirstSpirit, it is now possible to drag-and-drop from the integrated preview to the Media Store workspace (in Folder view or image resolution).
154922	All Users	SiteArchitect (JavaClient)	Page Store	Copying a section could lead to an error if the tag "LANG" was contained in the related data XML of the source section.
155930	All Users	SiteArchitect (JavaClient)	Page Store	In the Page Store, the permission check on content areas has been optimized.
156781	All Users	SiteArchitect (JavaClient)	Page Store	In the Page Store, the permission check when creating a page has been improved.
158039	All Users	SiteArchitect (JavaClient)	Page Store	In SiteArchitect, the dialog handling creation of new pages (store "Page content") has been improved.
130698	All Users	SiteArchitect (JavaClient)	Preview	In SiteArchitect, a page preview can also be displayed in an external browser. Here, the synchronization between preview and selection in SiteArchitect works once again.
151813	All Users	SiteArchitect (JavaClient)	Preview	In FirstSpirit, pages can be included in other pages using JSP applications. The recalculation of these pages has been optimized.
153739	All Users	SiteArchitect (JavaClient)	Preview	Version 15 of the Mozilla Firefox browser cannot be run on the 64 Bit version of Linux operating systems. In FirstSpirit, this exception is dealt with accordingly during configuration and browser selection.
153872	All Users	SiteArchitect (JavaClient)	Preview	Loading behavior in the preview has been optimized.
154346	All Users	SiteArchitect (JavaClient)	Preview	Support for using the Microsoft Internet Explorer 8 in the integrated preview has been improved.
155587	All Users	SiteArchitect (JavaClient)	Search	When performing a global search using the "*" placeholder, search suggestions are no longer displayed.
155984	All Users	SiteArchitect (JavaClient)	Search	On the Mac OS X operating system, the selection of other constraint criteria (facets) for the search has been optimized.
156242	All Users	SiteArchitect (JavaClient)	Search	The CMS_INPUT_IMAGEMAP input component can be used to embed links at various locations in a selected background image. In rare cases, the link contents were not taken into account during the search.
154893	All Users	SiteArchitect (JavaClient)	Site Store	For a page reference that is based on a contents page with an integrated data source, the datasets can be restricted on the "Data" tab using the previously created queries. The different parameter sequence in the query (XML) and in the page reference Data view could result in a display error.
156771	All Users	SiteArchitect (JavaClient)	Site Store	For a page reference that is based on a contents page with an integrated data source, the output behavior settings can be made on the "Data" tab. The display has been optimized here for small window sizes.
153967	All Users	SiteArchitect (JavaClient)	Tasks	On the Mac OS X operating system, the schedule selection in the "Project" menu has been optimized.
154576	All Users	SiteArchitect (JavaClient)	Template Development	In template development, the form preview was not always refreshed when defining rules ("Dynamic forms").
156816	All Users	SiteArchitect (JavaClient)	Template Store	Layout features can be specified for inline tables using style templates. Unfortunately, not all features were taken into account during the preview of the table format template.
153048	All Users	SiteArchitect (JavaClient)	Workflow	A confirmation prompt is now also displayed when closing an open task.
154654	All Users	SiteArchitect (JavaClient) and ContentCreator (WebClient)	All Stores	A warning message was displayed in the log file by mistake after an editorial language had been subsequently removed.
153790	Developer	ContentCreator (WebClient)	Scripting	The "FutureTimelineProvider", "HistoryTimelineProvider", "TimelineEntry", and "TimelineEntryProvider" interfaces are now available in the Developer API ("de.espirit.firstspirit.client.plugin.timeline" package).
143727	Developer	ContentCreator (WebClient)	Template Development	In the page template properties, the template extension to be referenced can be entered under "File extension" in the "Target ext." column. When entering "xhtml" or "xml", the FS_BUTTON input component could be displayed incorrectly in ContentCreator.
158084	Developer	None	Modules	The example implementation for modules (MDEV_modexamples.zip in FirstSpirit Online Documentation) has been updated for FirstSpirit version 5.1.
155446	Developer	None	Preview	User-defined cookies can be set for the preview by means of an external web application (for example a PHP interpreter). As a result, cookies which are set and required by FirstSpirit were removed by mistake.
154250	Developer	ServerManager (Server and Project Configuration)	Modules	When installing a customer-specific module, an empty directory specified in the "module.xml" file was not unpacked by mistake. This could lead to an error.

ID	Role	Category	Sub Category	Description
155928	Developer	SiteArchitect (JavaClient)	Dynamic Forms	In FirstSpirit, input components can be configured using rules ("Dynamic forms") so that editing is no longer possible. However, values can now be set using API methods.
154389	Developer	SiteArchitect (JavaClient)	Input Components	The CMS_INPUT_TOGGLE input component can have three different states: Never been set, set, and not set. In the first case (never been set), the value "null" is returned, which must also be taken into account when defining rules ("Dynamic forms").
152844	Developer	SiteArchitect (JavaClient)	Scripting	The "get-history()" method of the "Dataset" interface (Access API, "de.espirit.firstspirit.access.store.contentstore" package) now provides the current state of the history once a dataset has been released using the "release()" method of the same interface.
155134	Developer	SiteArchitect (JavaClient)	Scripting	Using the "setDisplayName(Language, String)" method of the "IDProvider" interface (Access API, "de.espirit.firstspirit.access.store" package), the language display name can now be set with ease.
155652	Developer	SiteArchitect (JavaClient)	Scripting	The "Advanced URL Creator" (SEO URLs) now also converts the percent sign (%) into a minus sign (-).
155497	Developer	SiteArchitect (JavaClient)	Template Development	When using "Template Inspection", the jump to the template has been optimized.
157667	Developer	SiteArchitect (JavaClient)	Template Inspector	The function "Template Inspection" has been optimized. Now, headline tags (<H1> to <H6>) are also supported. Also, elements from a format template - used to render sections of a page, for example - are considered.
153852	FirstSpirit Administrator	Administration	Generation	You can influence whether upper or lower case is used when files and folders are generated using the "useLowercase" parameter. More information can be found in the introduction (under "New useLowercase parameter").
156542	FirstSpirit Administrator	Administration	None	The current wrapper configuration file can now be viewed and changes can therefore be transferred by the administrator.
155130	FirstSpirit Administrator	Administration	Projects	In FirstSpirit, the "Server administrator" role can be assigned to users. With this configuration, Quickstart entries were displayed by mistake if the "Block administrator" option was set in the project.
156480	FirstSpirit Administrator	Administration	Security	The UNIX access rights have been changed. More information can be found in the introduction (under "fs-wrapper.conf: File access rights using the umask parameter").
153955	FirstSpirit Administrator	Administration	Workflow	A project-specific workflow can be specified in ServerManager for the purpose of deleting elements. With this configuration, an error could occur when using the button to delete a dataset for which a delete command had already been started.
154682	FirstSpirit Administrator	None	Modules	Using the "FirstSpirit™ Security" module in combination with the generation of Advanced URLs (Generation) could lead to malfunctions.
155717	FirstSpirit Administrator	ServerManager (Server and Project Configuration)	Modules	Security improvements in the "FirstSpirit DynamicPersonalization" module.
149420	FirstSpirit Administrator	ServerManager (Server and Project Configuration)	None	In ServerManager, a message is now displayed during repository conversion.
154070	FirstSpirit Administrator	ServerManager (Server and Project Configuration)	None	In ServerManager, the context menu display has been improved.
158145	FirstSpirit Administrator	ServerManager (Server and Project Configuration)	Tasks	Reference and search index calculation has been optimized.
150816	FirstSpirit Administrator	SiteArchitect (JavaClient)	ContentTransport	Transporting a dataset using the "ContentTransport" functionality could lead to inappropriate behavior within the target project, if a table in the database schema of the target project contained more columns than the source project.
153359	FirstSpirit Administrator	SiteArchitect (JavaClient)	External synchronization	In SiteArchitect, the privileges required to execute "External Synchronization" functionality have been modified. For further information, please refer to the introduction (section "External synchronization enhancements").
155574	FirstSpirit Administrator	SiteArchitect (JavaClient)	None	Server-side release with the option "Ensure accessibility" (context menu "Extras / Release") could erroneously fail to release a parent folder which has never been released yet.
152567	FirstSpirit Administrator	SiteArchitect (JavaClient)	Security	In FirstSpirit, HTTPS protocol management has been improved.
155665	Server Administrator	Administration	Security	New parameters have been introduced in the multi-access control filter. More information can be found in the introduction (under "FirstSpirit Security module and Advanced URL Creator").