



# FirstSpirit™

*Unlock Your Content*

## FirstSpirit™ Release Notes

### FirstSpirit™ Version 5.2 Release 3

<b>Version</b>	<b>5.2.311</b>
<b>Status</b>	<b>RELEASED</b>
<b>Date</b>	<b>2016-01-29</b>
<b>Department</b>	FS-Core
<b>Copyright</b>	2016 <b>e-Spirit AG</b>
<b>File name</b>	Releasenotes_5.2.311_EN

#### **e-Spirit AG**

Stockholmer Allee 24  
44269 Dortmund | Germany

T +49 231 . 477 77-0  
F +49 231 . 477 77-499

[info@e-Spirit.com](mailto:info@e-Spirit.com)  
[www.e-Spirit.com](http://www.e-Spirit.com)

e-Spirit

## Table of contents

<b>1</b>	<b>Administration: Forwarding of HTTP Header Information to an External Preview URL.....</b>	<b>6</b>
<b>2</b>	<b>Administration: Optimizations related to use of the FirstSpirit Launcher.....</b>	<b>6</b>
<b>3</b>	<b>Administration: SMTP Authentication.....</b>	<b>8</b>
<b>4</b>	<b>ContentCreator: Filter in FS_REFERENCE via &lt;SOURCES&gt;.....</b>	<b>9</b>
<b>5</b>	<b>ContentCreator: Stepless Resizing of the Input Component "Link-Sensitive Graphic" (CMS_INPUT_IMAGE_MAP).....</b>	<b>9</b>
<b>6</b>	<b>Downgrade to FirstSpirit 5.1 when using Berkeley DB V5.....</b>	<b>10</b>
<b>7</b>	<b>Integrated Software.....</b>	<b>11</b>
<b>8</b>	<b>Java Vulnerability (Serialization/Deserialization).....</b>	<b>11</b>
<b>9</b>	<b>Module Development, Scripts, API: New Interfaces to Open Version Comparison and Merge Dialogs.....</b>	<b>12</b>
<b>10</b>	<b>Module Development, Scripts, API: New Method for Cancelling Maintenance Mode.....</b>	<b>14</b>
<b>11</b>	<b>Module Development, Scripts, API: Recalculation of references for individual elements via ProjectReferencesAgent.....</b>	<b>16</b>
<b>12</b>	<b>Module development, scripts, API: Individualizing the global FirstSpirit web applications (BETA!).....</b>	<b>16</b>
<b>13</b>	<b>Module development, scripts, API: New interfaces and methods for implementing personal schedule actions.....</b>	<b>19</b>
<b>14</b>	<b>Search: Weighting of Contents in Input Components.....</b>	<b>20</b>



- 15 SiteArchitect: 'Group exclusion' function for transitions in workflows.....23**
- 16 SiteArchitect: Extended Filter and Sorting Functionality for Datasets..... 27**
- 17 Overview..... 33**
- 18 Categories.....42**
  - 18.1 Archiving..... 42
  - 18.2 Bookmarks..... 42
  - 18.3 Clipboard..... 42
  - 18.4 Content Store..... 43
  - 18.5 Content Transport..... 44
  - 18.6 ContentCreator..... 44
  - 18.7 Corporate Content..... 45
  - 18.8 Database..... 46
  - 18.9 Developer..... 46
  - 18.10 Dynamic Forms..... 48
  - 18.11 Editor..... 49
  - 18.12 External synchronization..... 49
  - 18.13 FirstSpirit API..... 49
  - 18.14 FirstSpirit Administrator..... 51
  - 18.15 Generation..... 52
  - 18.16 Indexing..... 52



18.17 Input Components..... 53

18.18 Launcher..... 54

18.19 Media Store..... 55

18.20 Module development..... 55

18.21 Modules..... 55

18.22 Page Store..... 56

18.23 Permissions..... 56

18.24 Preview..... 57

18.25 Reports..... 57

18.26 Search..... 57

18.27 Security..... 58

18.28 Server Administrator..... 58

18.29 ServerManager..... 59

18.30 ServerMonitoring..... 60

18.31 Site Store..... 60

18.32 SiteArchitect..... 60

18.33 Table templates..... 63

18.34 Tasks..... 64

18.35 Template Development..... 64

18.36 Template Store..... 65

18.37 Template Wizard..... 65



18.38 Version history.....65

18.39 Webstart..... 65

18.40 Workflow..... 66



## 1 Administration: Forwarding of HTTP Header Information to an External Preview URL

FirstSpirit version 5.2R3 introduces the parameter `preview.externalDeliveryForwardHttpHeaders` which may be specified in the file `fs-server.conf`. This parameter accepts a comma-separated list which contains the names of HTTP header fields which should be forwarded to the external web server specified by the parameter `preview.externalDeliveryURL`. Evaluation of this parameter is case-insensitive.

Possible values:

- Parameter is specified with an empty value  
No header fields and cookies are forwarded to the external web server.
- `preview.externalDeliveryForwardHttpHeaders=Cookie` (Default)  
Cookies set in header fields will be forwarded to the external web server, other header fields will not be forwarded. This setting is also used if the parameter is not specified in `fs-server.conf`.
- `preview.externalDeliveryForwardHttpHeaders=*`  
All header fields will be forwarded to the external web server. (Note: If the wildcard `*` is contained in a comma-separated list that contains explicit mentions of HTTP header fields, the wildcard will be ignored.)
- `preview.externalDeliveryForwardHttpHeaders=f1,f2`  
The HTTP header fields named “f1” and “f2” will be forwarded to the external web server.

For further information, see *FirstSpirit Manual for Administrators*, chapters

- “Area: Preview”
- “Passing authentication cookies”

## 2 Administration: Optimizations related to use of the FirstSpirit Launcher

FirstSpirit version 5.2R3 features several optimizations related to use of the FirstSpirit Launcher:

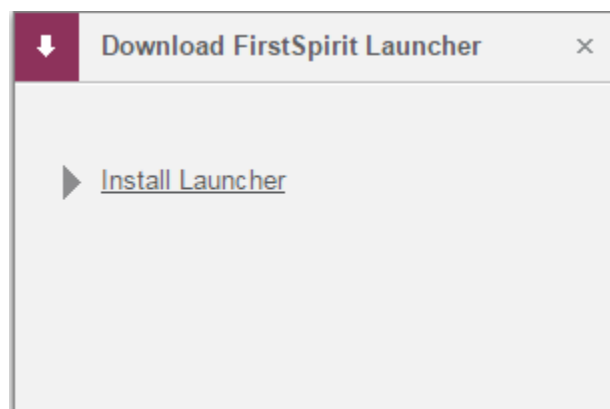


Use of the FirstSpirit Launcher is now possible via HTTPS. The entire client-server communication, including download of JAR and JRE files, can be encrypted.

Restriction of using the FirstSpirit Launcher via SSL: SSL certificates can currently (as of January 2016) not be validated while downloading the JRE and JAR files from a FirstSpirit server. However, validation of SSL certificates is planned for a future release.

Furthermore, security related to the use of authentication cookies has been improved. In order to successfully use the Launcher, the required cookies (see parameter `clientCookieNames` in the configuration file `fs-server.conf`) must be configured with an adequate lifespan. See also *FirstSpirit Manual for Administrators*, chapter “Area: Communication”.

**Roll-out via MSI:** Installation of the Launcher on a single workstation (until FirstSpirit version 5.2R2, inclusively: “Install Launcher as user”) may still be performed via the FirstSpirit start page (from FirstSpirit version 5.2R3 onwards: “Install Launcher”).



Installation for multiple workstations (until FirstSpirit version 5.2R2, inclusively: Install Launcher as administrator) requires execution of the file `FSLauncherSetup.msi`, available in `~FirstSpirit5\web\fs5root\clientjar`. See also *FirstSpirit Installation Instructions*, chapter “Distribution of MSI packages with a GPO”.

For improved clarity and due to permissions, the Launcher now consistently uses one directory to store files.

For further information, see

- *FirstSpirit Installation Instructions*, chapter “FirstSpirit Launcher (new in V5.2)”



- *FirstSpirit Manual for Administrators*, chapter “FirstSpirit Launcher”
- *FirstSpirit Manual for Administrators*, chapter “Area: Communication”

### 3 Administration: SMTP Authentication

FirstSpirit version 5.2R3 enables sending e-mails via SMTP using authenticated connections. Authentication is configured in the configuration file `fs-server.conf`:

`mail.smtp.login`: This parameter specifies the user name used to authenticate against the SMTP server. The user configured here must be known by the specified SMTP server. Additionally, this user's valid password must be configured using the parameter `mail.smtp.password` (see below).

`mail.smtp.password`: This parameter specifies the password of the user (`mail.smtp.login`) used to authenticate against the SMTP server.

If both parameters (`mail.smtp.login` and `mail.smtp.password`) are configured, mail submission by FirstSpirit will use authenticated connections. If these parameters are not specified, authenticated connections will not be used.

The Java interface “Javamail” provides further parameters and configuration opportunities for mail submission (e.g. configuration of encryption). These parameters may be configured in the file `fs-server.conf`, prefixed with `javamail`, e.g.:

```
javamail.mail.smtp.starttls.enable=true
javamail.mail.smtp.starttls.required=true
# enable SASL to support CRAM-MD5 authentication
javamail.mail.smtp.sasl.enable=true
```

For further information, see

- *FirstSpirit Manual for Administrators*, chapter “Area: Mail”
- [Javamail API](#)





## 4 ContentCreator: Filter in FS\_REFERENCE via <SOURCES>

The input component FS\_REFERENCE enables referencing of one element selected by a user. Selection of an element for referencing may be limited to specific stores and/or folders by using the tag <SOURCES>.

In rare cases, special configurations could lead to erroneous behavior in ContentCreator: in such cases, not all elements eligible for selection were displayed. This behavior was corrected in FirstSpirit version 5.2R3.

Due to this fix, it is recommended that existing uses of FS\_REFERENCE configurations with a <SOURCES> tag be checked to ensure that element selection controls associated with FS\_REFERENCE components display the desired set of elements in allowed sources and omit elements that are not in allowed sources.

For further information, see

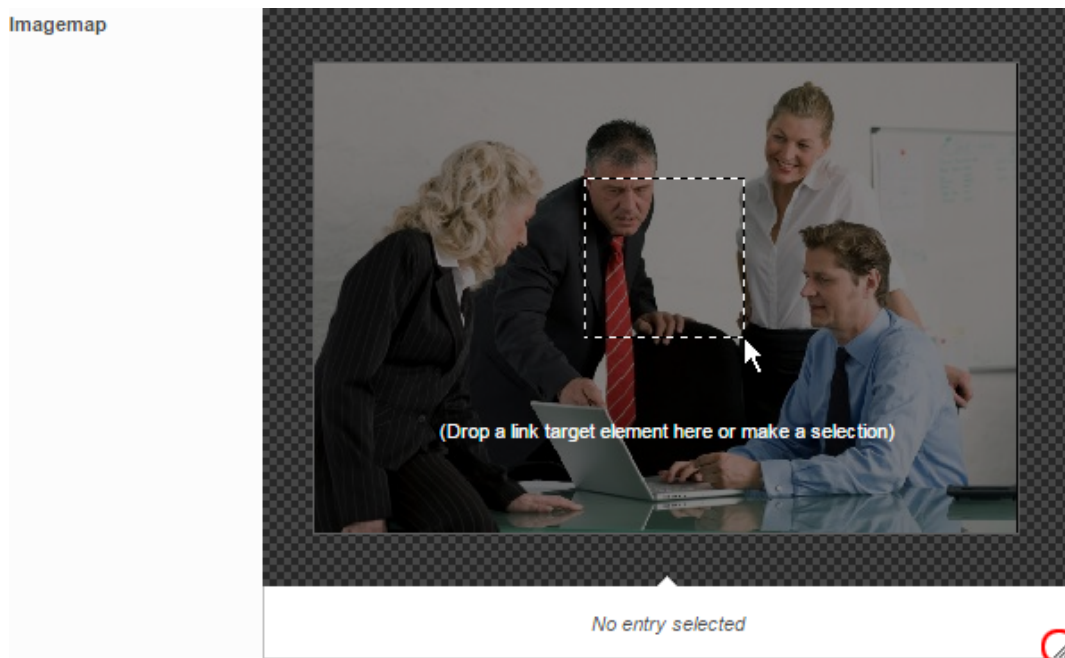
- *FirstSpirit Online Documentation*, “Template development / Forms / Input components / REFERENCE”
- *FirstSpirit Manual for Editors (ContentCreator)*, “Editing the preview page / Standard input elements / Reference selection”

## 5 ContentCreator: Stepless Resizing of the Input Component "Link-Sensitive Graphic" (CMS\_INPUT\_IMAGE\_MAP)

Using the input component “Link-Sensitive Graphic” (CMS\_INPUT\_IMAGE\_MAP), link areas may be placed over a background image.

Starting with FirstSpirit version 5.2R3, the height of this input component may be adjusted by dragging the resize handle in the lower right corner of the input component.





The minimum height of this input component is 340 pixels.

For further information, see

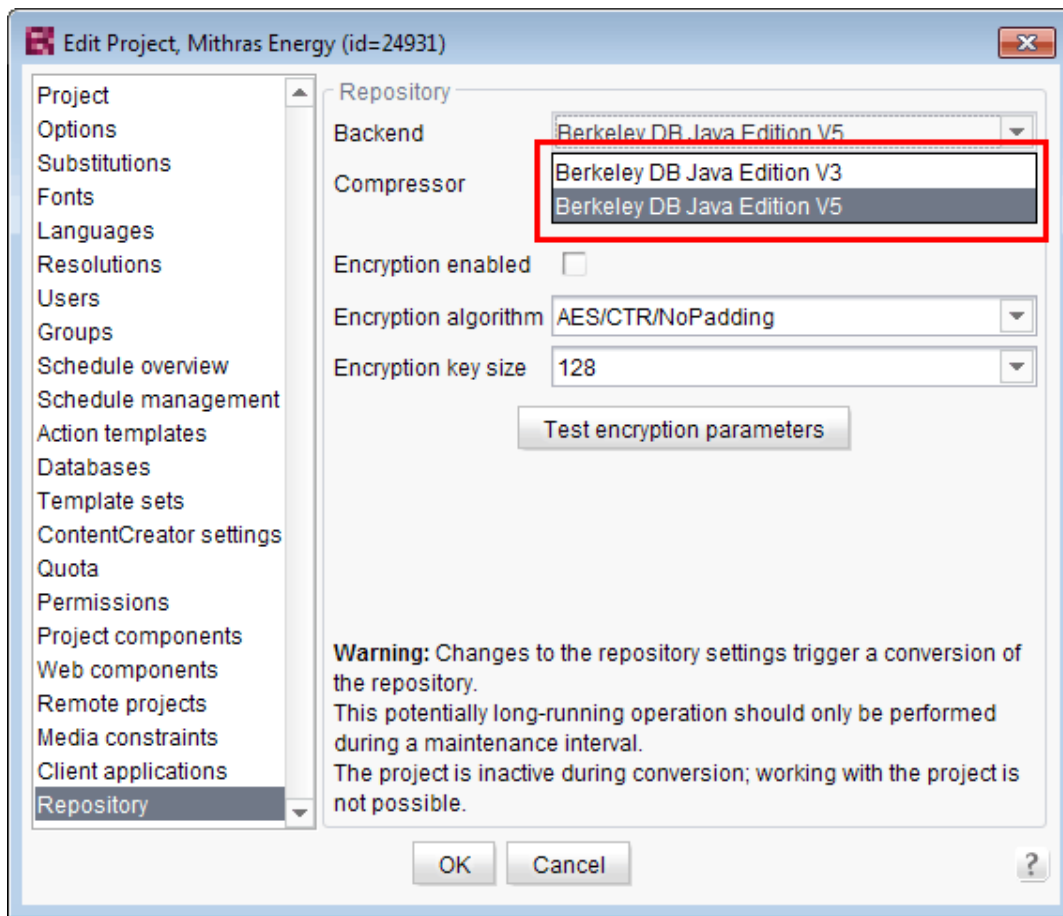
- *FirstSpirit Manual for Editors (ContentCreator)*, “Editing a preview page / Input elements / Imagemap”,
- *FirstSpirit Online Documentation*, “Template development / Forms / Input components / IMAGEMAP”

## 6 Downgrade to FirstSpirit 5.1 when using Berkeley DB V5

It is possible – in principle – to downgrade from one FirstSpirit minor version to another (for example from FirstSpirit version 5.2 to FirstSpirit version 5.1), but this is **not an assured product property**. Use of Oracle Berkeley DB version 5 as a repository for content storage (“FirstSpirit ServerManager / Project Properties / Repository / Backend”) can lead to problems when downgrading from FirstSpirit version 5.2 to FirstSpirit 5.1.

In order to downgrade a FirstSpirit server--which has initially been installed with a FirstSpirit version lower than 5.2 and now uses FirstSpirit version 5.2 as well as Berkeley DB version 5--to FirstSpirit version 5.1, the repository of each project must be configured to use Berkeley DB version 3 before conducting the downgrade.





This only applies to servers which have initially been installed with a FirstSpirit version lower than 5.2. A downgrade of servers initially installed with FirstSpirit version 5.2 to a lower version is not possible.

For further information about selecting the desired Berkeley DB version, see *FirstSpirit Manual for Administrators*, chapter “Repository”.

## 7 Integrated Software

The integrated Chrome browser engine “JxBrowser” has been updated to version 4.9.5.

## 8 Java Vulnerability (Serialization/Deserialization)

Java applications which use or include the Java libraries

- “Common Collections” (Apache)



- “Groovy”
- “Spring Framework”

may pose a potential security risk: a vulnerability in these libraries enables an attacker to execute code on a server without prior authentication. Further libraries affected by this vulnerability are currently not known.

The FirstSpirit core software itself is not affected by this security threat as it does not use any of the aforementioned libraries.

However, several FirstSpirit Modules used or use at least one of the affected libraries and thus may have been or may be used as vectors for malicious attacks against FirstSpirit.

Furthermore, third-party FirstSpirit Modules may be affected.

FirstSpirit version 5.2R3 includes a bugfix which provides extensive protection against known and unknown attacks which exploit this vulnerability. This fix also protects potentially vulnerable modules (server-side only!). An update to this FirstSpirit version increases the general security of FirstSpirit, e.g. when FirstSpirit is deployed in an unprotected environment.

Several of the aforementioned modules have already received specific bugfixes to protect against this vulnerability.

For further information, see the related posting in the [FirstSpirit-Community](#).

Please direct questions about this subject to e-Spirit Technical Support.

For further information about the vulnerability, see [www.foxglovesecurity.com](http://www.foxglovesecurity.com).

## 9 Module Development, Scripts, API: New Interfaces to Open Version Comparison and Merge Dialogs

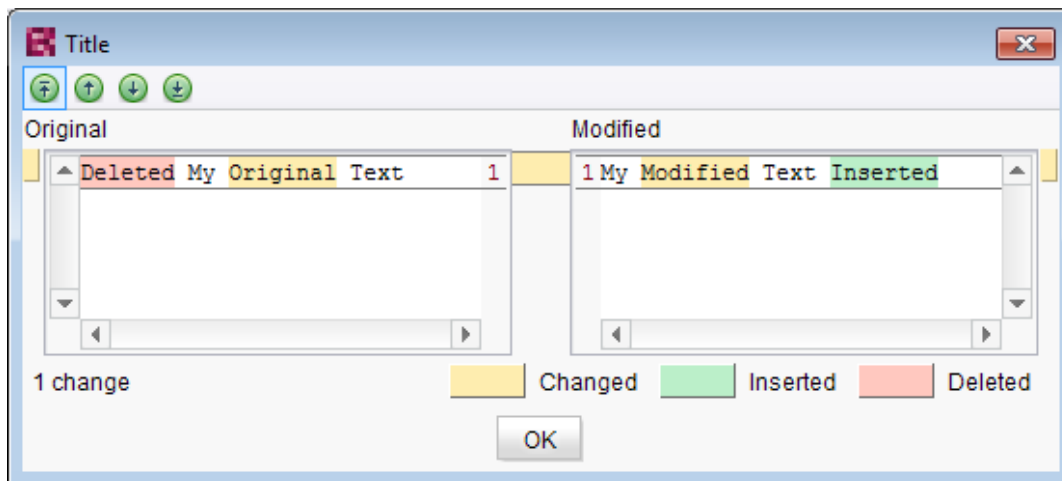
FirstSpirit version 5.2R3 introduces new interfaces (both in the package `de.espirit.firstspirit.ui.operations`, FirstSpirit Developer-API) to support comparison and merge functionality, respectively, for revisions:

- `OpenComparisonDialogOperation`
- `OpenMergeDialogOperation`



**Example for OpenComparisonDialogOperation:**

```
import de.espirit.firstspirit.agency.OperationAgent;
import de.espirit.firstspirit.ui.operations.OpenComparisonDialogOperation;
import java.io.StringReader;
operationAgent = context.requireSpecialist(OperationAgent.TYPE);
operation = operationAgent.getOperation(OpenComparisonDialogOperation.TYPE);
operation.setDialogTitle("Title");
operation.setOriginalHeader("Original");
operation.setModifiedHeader("Modified");
originalText = "Deleted My Original Text";
modifiedText = "My Modified Text Inserted";
operation.perform(originalText, modifiedText);
return 0;
```



Comparison (OpenComparisonDialogOperation)

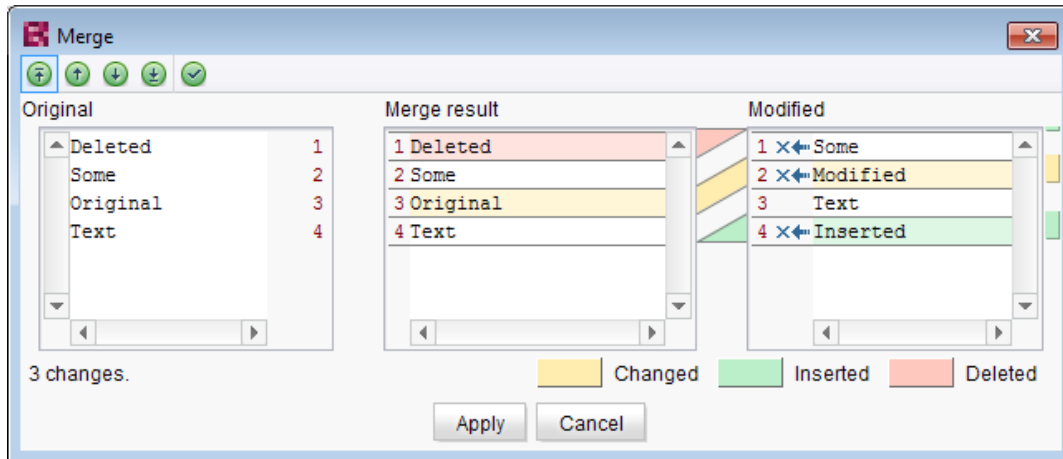
**Example for OpenMergeDialogOperation:**

```
import de.espirit.firstspirit.agency.OperationAgent;
import de.espirit.firstspirit.ui.operations.OpenMergeDialogOperation;
import java.io.StringReader;
operationAgent = context.requireSpecialist(OperationAgent.TYPE);
operation = operationAgent.getOperation(OpenMergeDialogOperation.TYPE);
operation.setDialogTitle("Title");
operation.setOriginalHeader("Original");
operation.setModifiedHeader("Modified");
originalText = "Deleted\nSome\nOriginal\nText";
```



```

modifiedText = "Some\nModified\nText\nInserted";
resultingText = operation.perform(originalText, modifiedText);
print("Merge result = '" + resultingText + "'");
return 0;
    
```

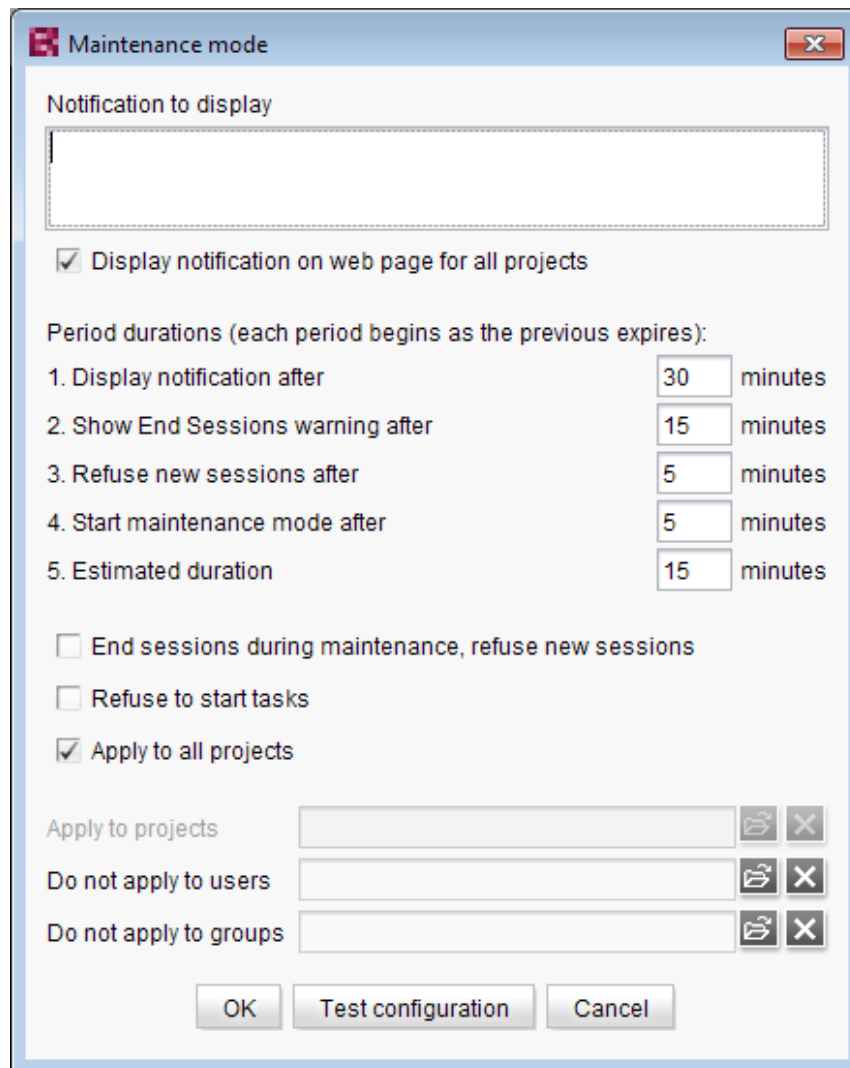


Merge (OpenMergeDialogOperation)

## 10 Module Development, Scripts, API: New Method for Cancelling Maintenance Mode

FirstSpirit supports a maintenance mode which may be used to shut down the server at a pre-planned time in order to perform updates or other system maintenance. Depending on configuration, users may be prohibited from logging onto the FirstSpirit server or opening specific projects, while currently logged on users will receive a notification that the FirstSpirit server is about to be shut down. Maintenance mode is controlled by a schedule task (ServerManager / Server / Properties / Schedule Management / Action “Maintenance mode”). In this task, the duration of maintenance mode may also be specified (option “Estimated duration”).





Configuration of a maintenance mode task

The new method `boolean stopMaintenance(long scheduleEntryId)` (FirstSpirit Access API, Package `de.espirit.firstspirit.access`, Interface `AdminService`) may be used to cancel maintenance mode via the API, e.g. if the maintenance tasks have been completed sooner than planned (and specified in the schedule task's "Maintenance mode" action).

The ID of the schedule task that was used to start maintenance mode must be provided using the parameter `scheduleEntryId`. The method returns `true` if maintenance mode was cancelled successfully.

For further information about configuring maintenance mode, see *FirstSpirit Manual for Administrators*, chapter "Maintenance mode".



## 11 Module Development, Scripts, API: Recalculation of references for individual elements via ProjectReferencesAgent

If a project contains broken references, the project-level schedule activity “Repair references” may be used to recalculate references within the project. This task operates on the entire project and may take a long time to complete, depending on the project’s size.

FirstSpirit version 5.2R3 introduces a new agent, `ProjectReferencesAgent` (FirstSpirit Developer API, package `de.espirit.firstspirit.agency`), which enables recalculation of references for individual elements using the method `rebuildReferences(IDProvider)`. The agent also provides a means to trigger recalculation of all references in the project via API (method `rebuildReferences()`).

## 12 Module development, scripts, API: Individualizing the global FirstSpirit web applications (BETA!)

FirstSpirit builds on the concept of modular extensibility by customers and partners. This means that the FirstSpirit standard functions can be adjusted relatively easily to the specific requirements of the projects in question by means of individual, project-specific enhancements (such as input components, services, applications).

**Previously (prior to FirstSpirit version 5.2R3)**, configurable instances of the FirstSpirit web applications that were local to the project had to be created for these individual enhancements. This is still possible in 5.2R3.

**With FirstSpirit version 5.2R3**, however, it is also possible to adapt the global FirstSpirit web applications (`fs5root`, `fs5preview`, `fs5webedit`, etc.) individually for the first time, significantly reducing the amount of memory needed, particularly in a corporate environment with many projects.

The following use case should illustrate the advantages of the new strategy:

An individual report (and/or an EasyEdit action, JSP tag lib, executable, etc.) is to be added to the ContentCreator. The necessary classes are defined in a module in a web app component and the module is installed on the FirstSpirit Server.

ContentCreator as local project instance: A ContentCreator instance that is local to the project is then created for each project that is to use the new functionality (report, JSP tags, etc.) and the application is configured with the web app component (from the module) (add, configure, deploy).





Aside from the amount of work involved, one ContentCreator instance for n projects also means that n instances of the application are stored on the front-end side, which can potentially take up a lot of memory on the front-end server.

New functionality – ContentCreator as global, individualized web application: By contrast, the new functionality can be used to add individual web app components directly to the global web application. To do this, the desired web app component is simply added and deployed via the FirstSpirit ServerManager in the “Server Properties / Web applications” area. The added enhancements are now available to all projects on the server (for which no local project ContentCreator instance has been configured). If, for example, a JSP tag lib has been provided via the web app component, the corresponding tags can then be used in all projects. It is no longer necessary to create instances that are local to the project. Instead of n instances, only one instance now needs to be stored on the front-end side.

! This functionality is currently still in the beta stage and should not be used in live environments. It can be released on request in FirstSpirit version 5.2R3 via the e-Spirit Technical Support.

#### Further prerequisites:

**Scope:** The introduction of the new functionality has also changed the scope of the components. Previously, web applications only had “local web” visibility, i.e., after installing the module, they had to be added to the desired web areas in the projects and were then available in the relevant project.

A second, server-wide scope has now been added to this existing scope. The **scopes** attribute, which can be used within the module declaration, has been added for this purpose. Possible values:

```
<web-app scopes="global">
```

```
<web-app scopes="project">
```

```
<web-app scopes="global, project">
```

If a new web application is added via the ServerManager in the “Server Properties / Web applications” area, only components with the **global** scope can be assigned to this application. Conversely, only web components with the **project** scope can be assigned to a project (in the “Project Properties / Web components” area).



For developers, web app components differ according to their scope with regard to the information available via the “SpecialistsBroker”. Web applications that are local to a project have a “WebEnvironment” which inherits from the “ProjectEnvironment” and they receive (via the `#getBroker` method) a (project-specific) instance of the type `SpecialistsBroker`.

For global web applications, the “WebEnvironment” returns a project-independent instance of the type `SpecialistsBroker` when `#getBroker` is called, and therefore returns “null” when `#getProject` is called.

```
<module>
  ...
  <components>
    ...
    <web-app scopes="global">
      ...
    </web-app>
  </components>
</module>
```

Configuration: The configuration options of the web components also need to be looked at in more detail according to the scope. Previously, a configuration for a web application was always local to a project, i.e., special values could be entered in the relevant configuration GUI for each individual project. For a global web application, the initial configuration can only take place at a global level. However, it is also possible to carry out an additional configuration that is local to a project for global web app components, e.g., via an additional project application which is also part of the module.

```
<module>
  ...
  <components>
    ...
    <web-app scopes="global">
      ...
      <configurable> MyGlobalAppConfigPanel </configurable>
    </web-app>

    <project-app>
      ...
      <configurable> MyProjectAppConfigPanel </configurable>
    </project-app>
  ...
```



```
</components>  
</module>
```

For more information on developing and configuring web applications, see also

- *FirstSpirit Manual for Administrators*, chapter “Web applications”
- *FirstSpirit Developer Manual for components (German only)*

### 13 Module development, scripts, API: New interfaces and methods for implementing personal schedule actions

FirstSpirit schedule entry planning enables time-controlled execution of actions (“tasks”) at server/project level. Associated actions can be combined in one schedule. From FirstSpirit version 5.2R3 onward, the following FirstSpirit Developer API interfaces and methods enable the implementation of further functions for self-implemented actions, which can be used to access and further process information from other actions, for example:

- **Generating** interface (`de.espirit.firstspirit.scheduling.aspects` package):  
This interface is used to identify a generation schedule and, for example, to query the status of the schedule and the number of generated pages.
- **GenerationAgent** interface  
(`de.espirit.firstspirit.scheduling.agency` package):  
This interface is used specifically to respond to generation schedules.
- **getAspect** method  
(`ScheduleTaskControl` interface, `de.espirit.firstspirit.scheduling` package):  
Provides aspects of the current schedule.
- **configureGenerateTask(@NotNull ScheduleTaskControl control)** method  
(`DeltaGeneration.ChangeSet` interface,  
`de.espirit.firstspirit.access.schedule` package):  
Configures a control object.

For more information, see also *FirstSpirit Online Documentation*, “Plug-In Development / Server Plug-Ins / Schedule Tasks”.

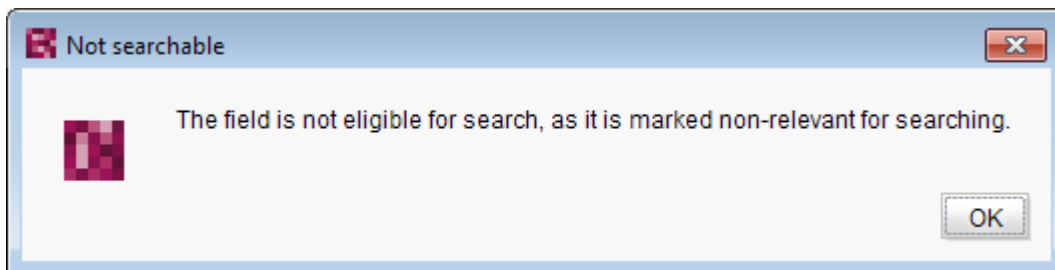


## 14 Search: Weighting of Contents in Input Components

Weighting of content in search results may be specified per input component using the attribute **searchRelevancy** within the GOM XML tag of an input component (SiteArchitect: global search, search in data sources | ContentCreator: search in report area). For example, using this parameter, template developers may specify that elements which contain a search term in a headline input component should be displayed more prominently in search results than elements which only contain the search term in a body text input component. Additionally, individual input components may be configured so that their contents be ignored during indexing, which may increase indexing performance.

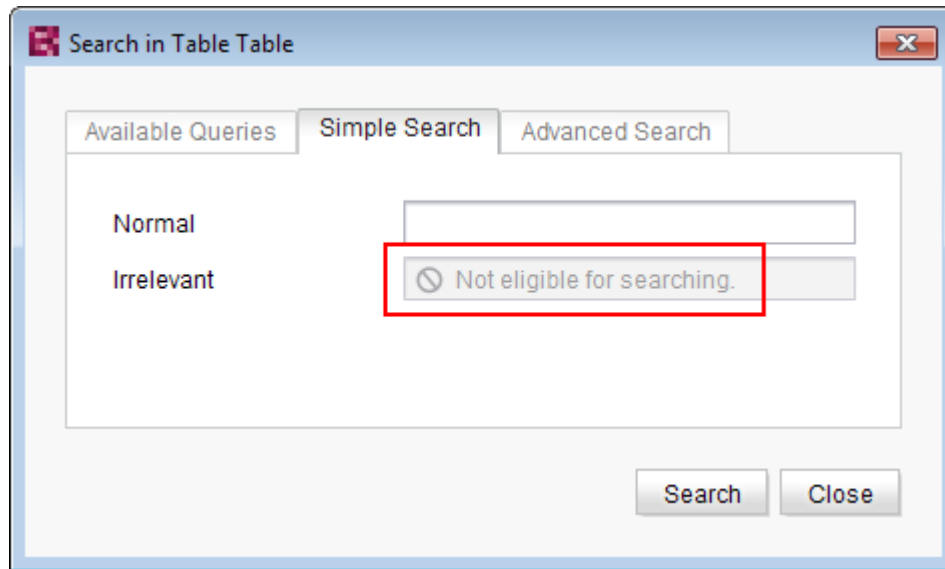
**Input components may be configured with the following attributes** in order to specify how their contents are handled during indexing:

- **searchRelevancy="none"**: The content of an input component that is configured with this search relevancy value **will not be indexed**. Pages, sections, and datasets which contain input components configured with this search relevancy value will not appear in search results if the search term only appears in the contents of these non-indexed input components. Searching for contents of such input components using drag-and-drop will yield no results (message "The field is not eligible for search, as it is marked non-relevant for searching."). In data sources, such fields are also marked accordingly in the Simple Search user interface ("Not eligible for searching."):



and





- **searchRelevancy="default"**: The input component's content **will be indexed with default weight**. This is the standard setting for input components.
- **searchRelevancy="high"**: The content of an input component which is configured with this search relevancy value **will be indexed with a higher weight** and thus displayed more prominently in search results (exception: search for datasets). This means that if a search term appears in both an element with an input component configured for high search relevancy and an element with an input component configured for default search relevancy, the element which contains the search term in a high-relevancy input component will be shown in a higher position in search results.

If the attribute is not specified for an input component, the component's content will be indexed with a default weight (**searchRelevancy="default"**).

**For nested input components** (FS\_CATALOG, FS\_INDEX, FS\_LIST, CMS\_INPUT\_IMAGE\_MAP, CMS\_INPUT\_LINK--also CMS\_INPUT\_DOM and CMS\_INPUT\_DOMTABLE with one restriction, see below), input components of inner entries (which are based on other templates) will be indexed as follows:



computed searchRelevancy of input component of inner entry		searchRelevancy input component in template of inner entry		
		High	Default	None
searchRelevancy outer input component	High	High	High	None
	Default	High	Default	None
	None	None	None	None

- **Outer input component is configured with searchRelevancy="none":**
  - **Inner entries will not be indexed** regardless of the searchRelevancy settings of input components in the templates used for inner entries.
  
- **Outer input component is configured with searchRelevancy="default":**
  - In inner entries, contents of input components with searchRelevancy="none" will not be indexed.
  - In inner entries, contents of input components with searchRelevancy="default" will be indexed with normal weight.
  - In inner entries, contents of input components with searchRelevancy="high" will be indexed with higher weight.
  
- **Outer input component is configured with searchRelevancy="high":**
  - In inner entries, contents of input components with searchRelevancy="none" will not be indexed.
  - In inner entries, contents of input components with searchRelevancy="default" and searchRelevancy="high" will be indexed with higher weight.

In general, links in values of input components CMS\_INPUT\_DOM and CMS\_INPUT\_DOMTABLE are indexed according to the searchRelevancy settings associated with single input components in link forms. However, the link text of a link (the input component which is selected in the link template's "Link text" option) will be indexed with the weighting of the CMS\_INPUT\_DOM or CMS\_INPUT\_DOMTABLE component.

**Note:** "Header fields" of snippets (tab "Snippet" in templates) are also indexed. If an input component is configured with a weighting "none" (searchRelevancy="none") but its value is included in the



template's snippet header field, searching for the input component's value will cause the associated element to appear in search results.

Changing the weighting setting of an input component in a template does not immediately affect the indexed data of existing elements based upon that template, and search results will continue to reflect the old weighting until elements based upon that template are modified and saved (at which time they will be reindexed in the background). Alternatively, the entire project or parts thereof may be reindexed via a schedule task or the FirstSpirit APIs, which does not require elements to be changed. However, reindexing large numbers of elements is memory and CPU-intensive and should only be performed during a planned maintenance period!

For further information, see

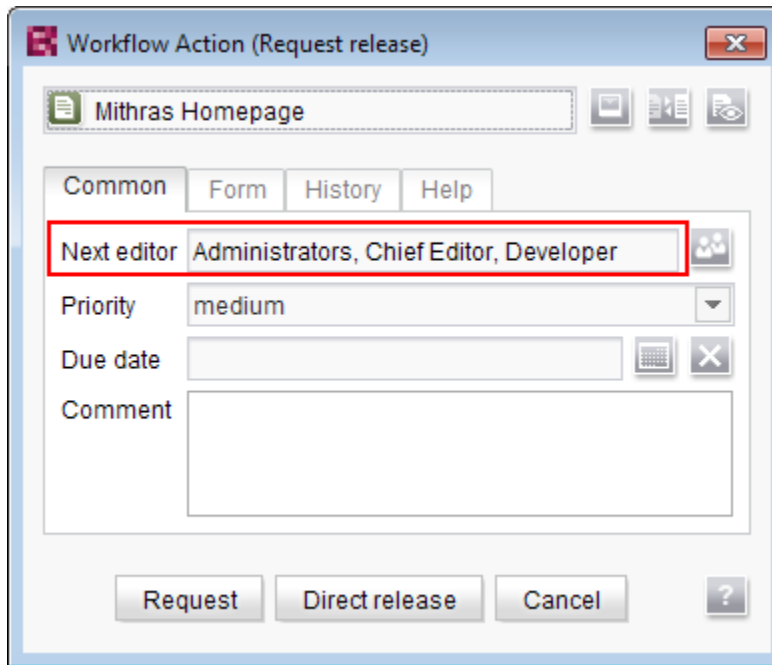
- *Documentation for FirstSpirit SiteArchitect*, chapter “The global search” etc.
- *FirstSpirit Manual for Editors (ContentCreator)*, chapter “Search function in the report area” etc.
- *FirstSpirit Manual for Administrators*, chapter “Rebuild search index”
- *FirstSpirit Developer API*, interface `GomSearchRelevancy`  
(package `de.espirit.firstspirit.access.store.templatestore.gom`)
- *FirstSpirit Access API*, interface `SearchService`  
(package `de.espirit.firstspirit.access.search`)
- *FirstSpirit Developer API*, interface `QueryAgent`  
(package `de.espirit.firstspirit.agency`)

## 15 SiteArchitect: 'Group exclusion' function for transitions in workflows

A workflow is a sequence of tasks that is completed according to a fixed, predefined structure. In FirstSpirit, this consists of statuses, activities, and transitions, whereby transitions form the link between activities and statuses. Due date deadlines and groups of authorized individuals can be defined in FirstSpirit for the respective tasks. Authorizations are defined for transitions.

The “Group exclusion” field for a transition (“Permissions” tab) is used to select groups which are not to be preselected as “Next editor” in the workflow dialog:





If the user does not explicitly select these groups in the workflow dialog, they will not receive an e-mail message either.

It is only possible to define such a group exclusion for transitions which indicate an activity. From FirstSpirit version 5.2R3 onward, this definition is now also prevented in the GUI for transitions which indicate a status:



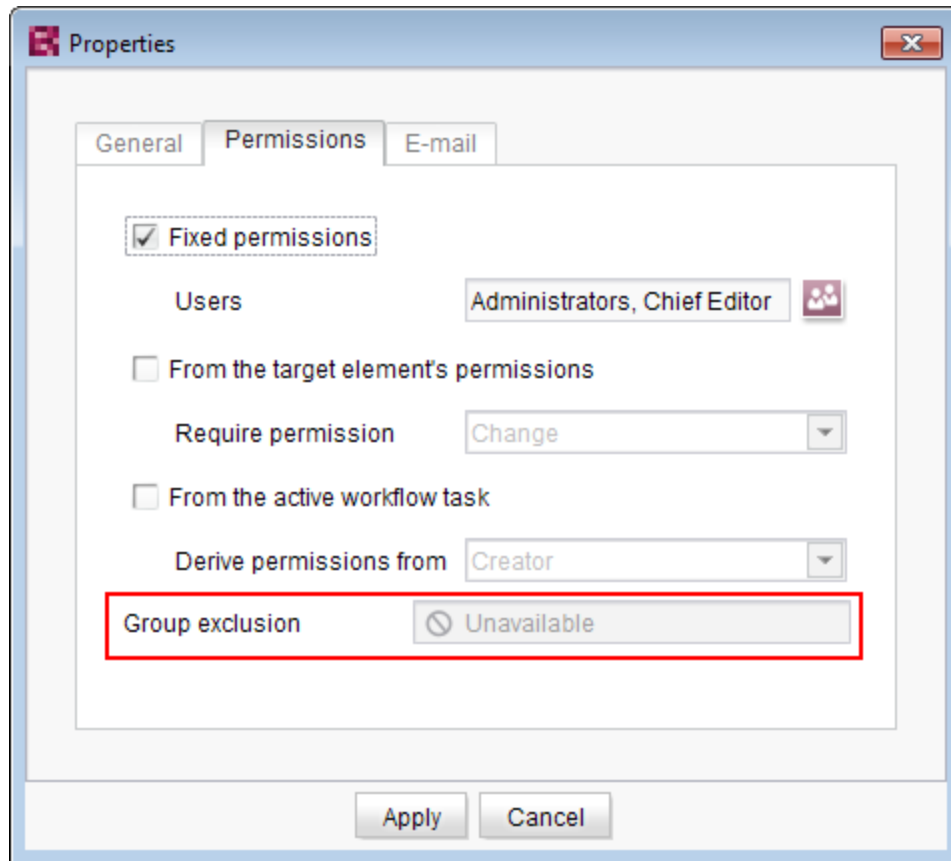


General	
Reference name	Anfordern
Source	Request release
Target	Release requested
Comment	Anforderung einer Freigabe...
German	
Display name	Anfordern
Description	Anforderung einer Freigabe...
English	
Display name	Request
Description	Requesting a release for th...
Permissions	
Group exclusion	Unavailable
Fixed permissions	
Activate	<input checked="" type="checkbox"/>
Users	Everyone
From the target element's perm...	
Activate	<input type="checkbox"/>
Require permission	Release
From the active workflow task	

In the properties table

and

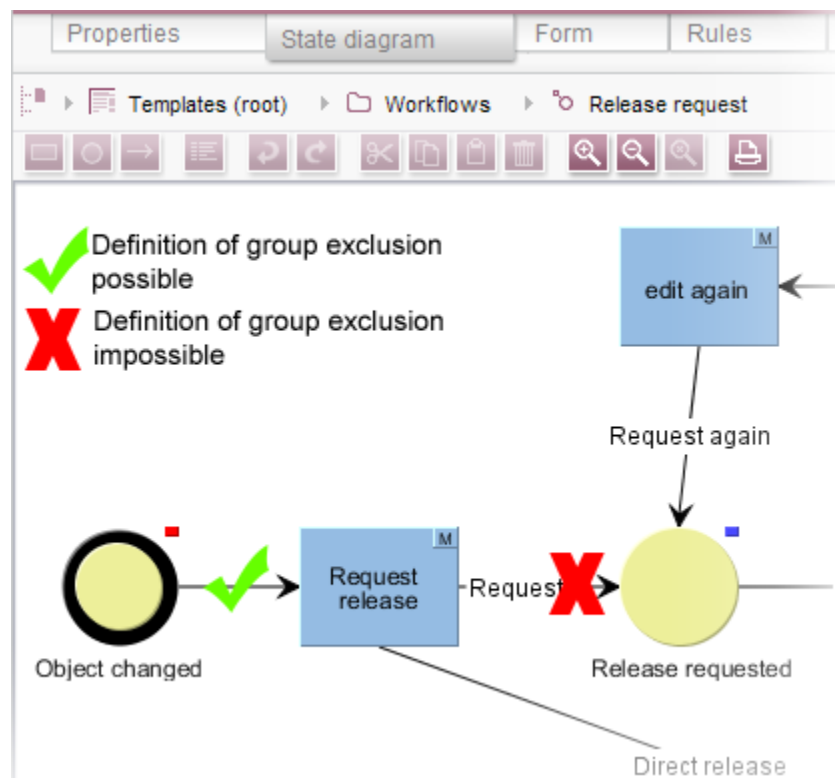




In the dialog

The group(s) that is/are not to appear automatically as “Next editor” in the workflow dialog must be specified for the transition which indicates the previous activity in the workflow:





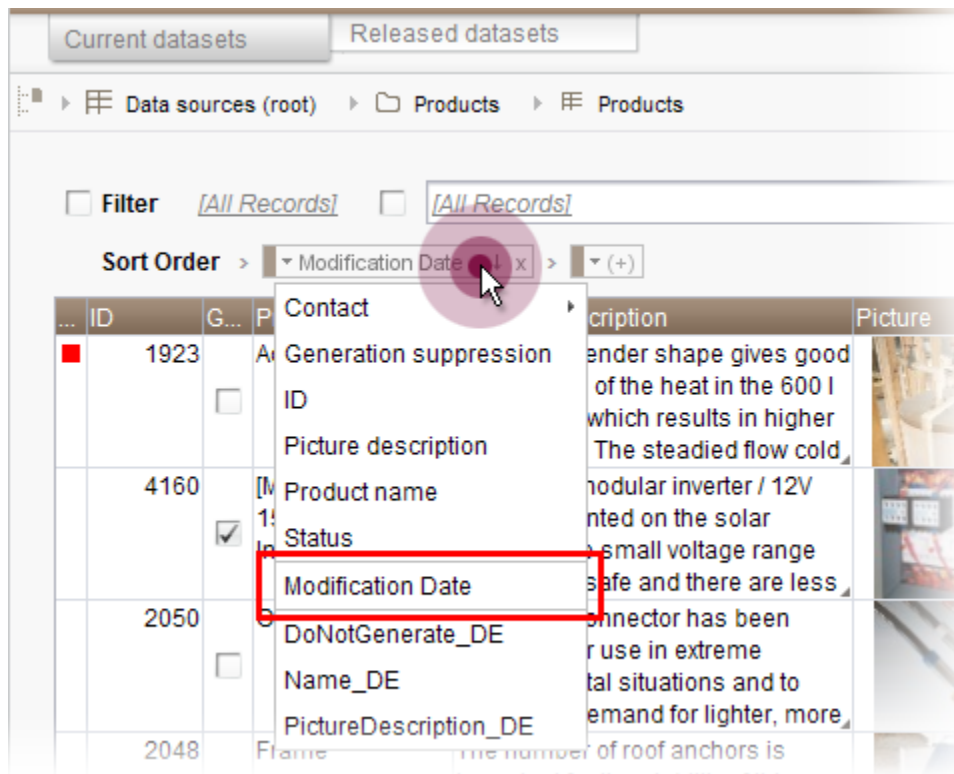
For more information, see also *FirstSpirit Online Documentation*, “Templates (basics) / Composition of templates / Workflows / State diagram tab / Properties of a transition”.

## 16 SiteArchitect: Extended Filter and Sorting Functionality for Datasets

The Data Sources store is used to create and maintain strongly structured content, i.e. datasets. In the tabular overview of a data source, the existing datasets are displayed in two tabs that contain current and released datasets. This tabular overview supports filtering and sorting to customize the view.

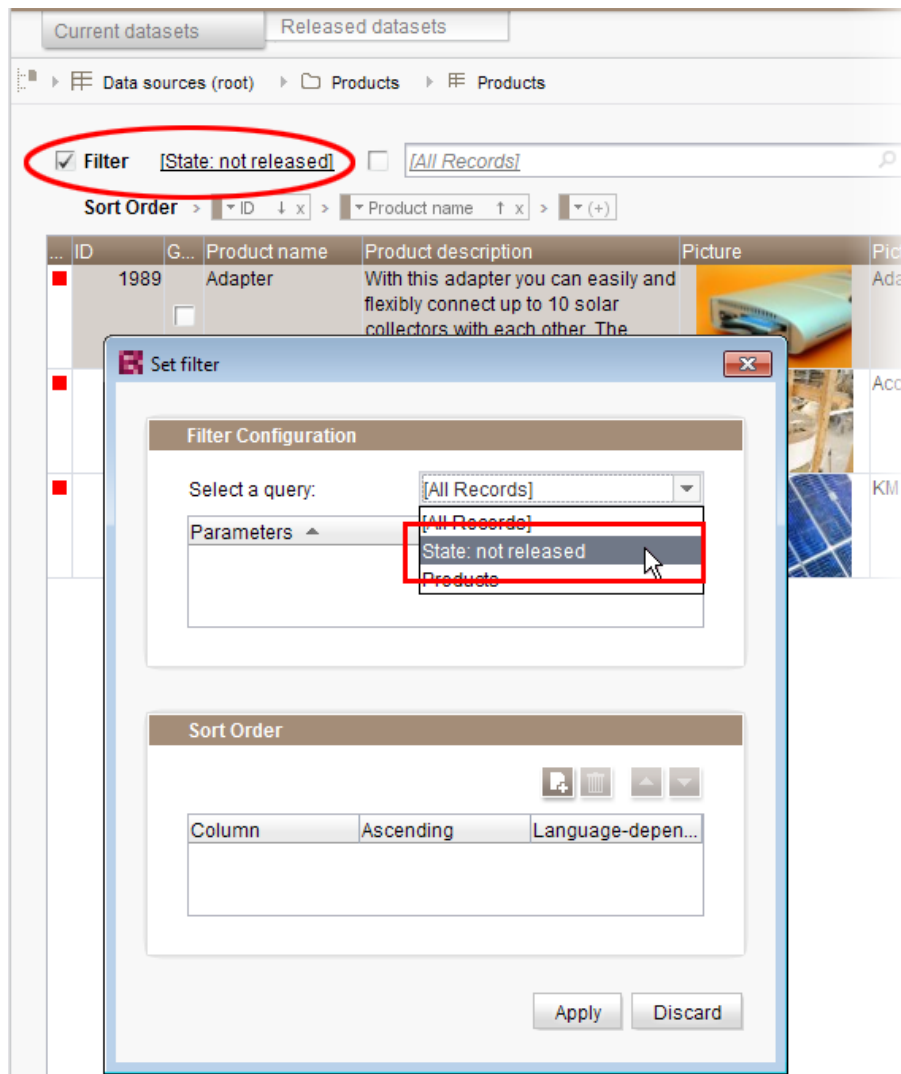
In FirstSpirit version 5.2R3, **current datasets** can also be sorted by the time of modification such that the most recently edited datasets can be shown at the top of the list. This sorting can be enabled by using the new sort criterion “Modification Date”:





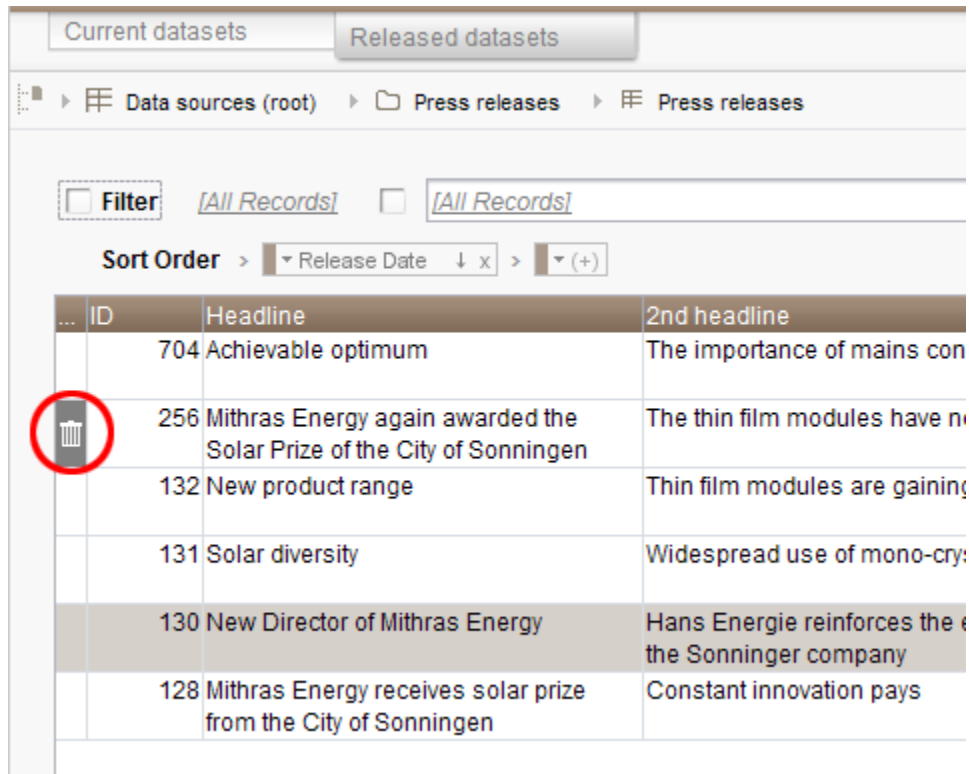
As before, the leftmost column in the tabular view may be used to sort datasets by workflow state. The tabular view may be configured to display only datasets which are not released by using the new filter “State: not released”:





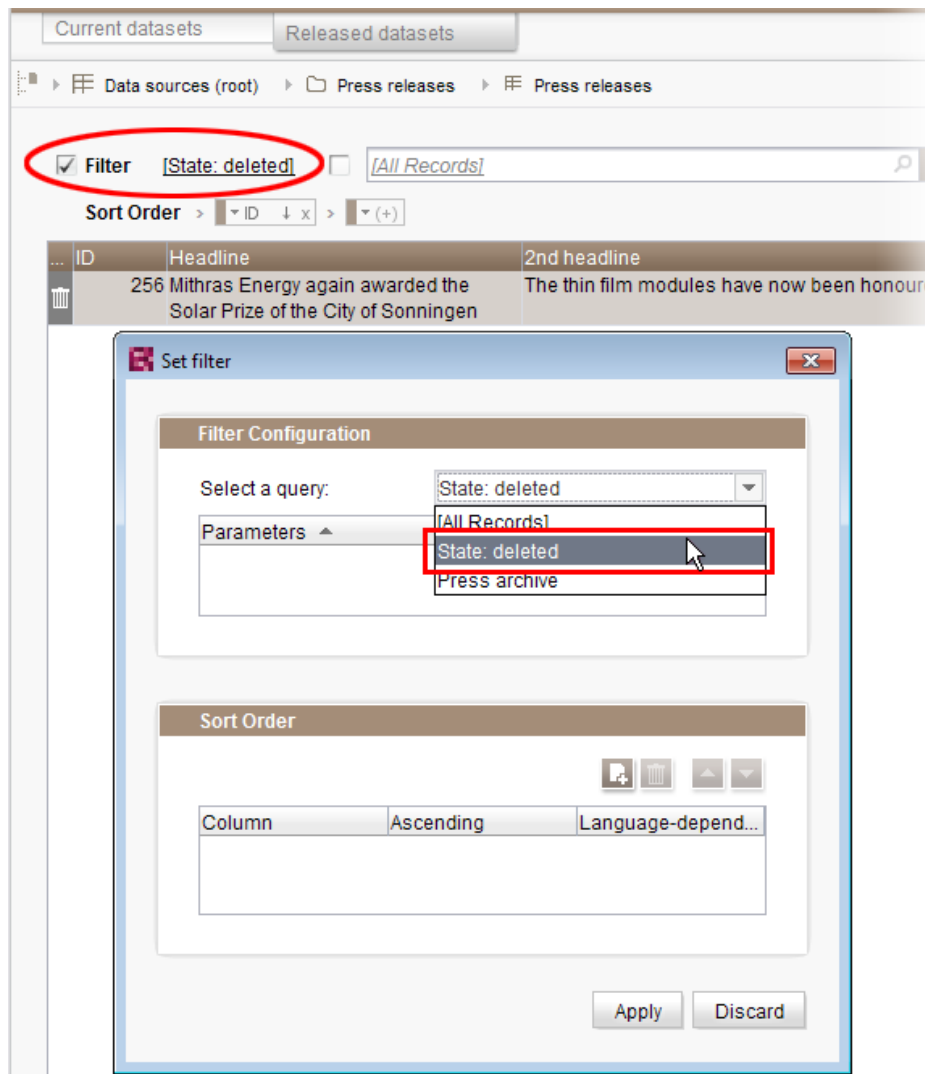
If a dataset should be **deleted** completely from a data source, it must be deleted in both the current and the released state. Datasets which have been deleted in the current state but are still present in the tab “Released datasets” (and potentially should be deleted there as well) are now marked with a paper bin icon:





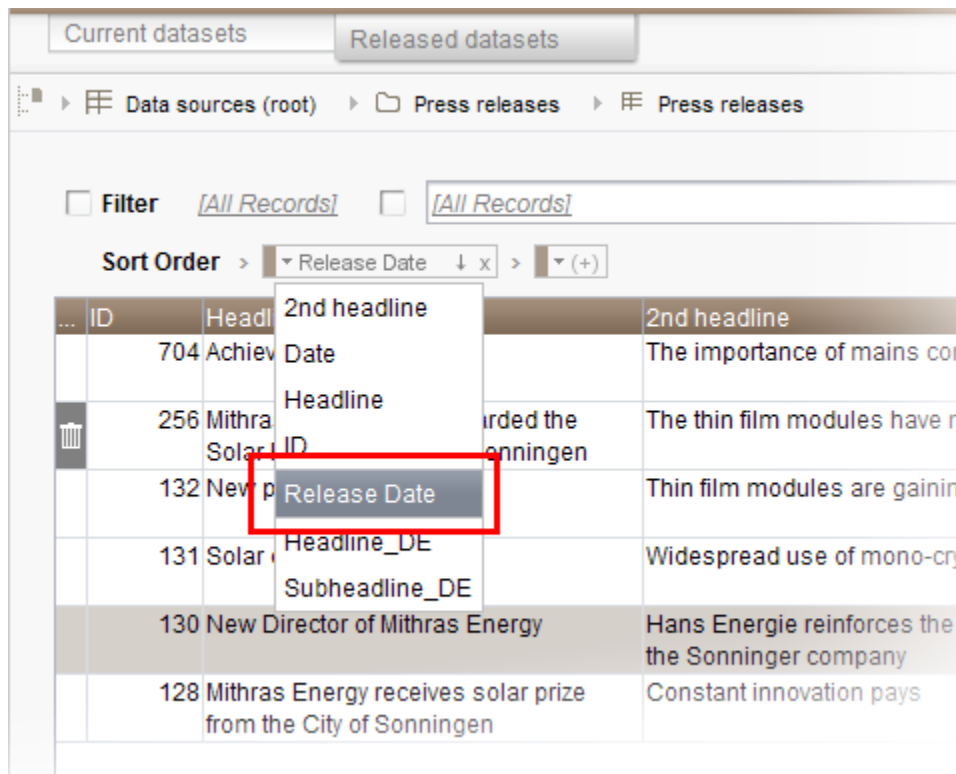
This icon may be used to delete the associated dataset in its released state. In order to more quickly identify datasets which have been deleted in current state but are still present in a released state, the “Released datasets” table may be configured to display only such datasets by using the new filter “State: deleted”:





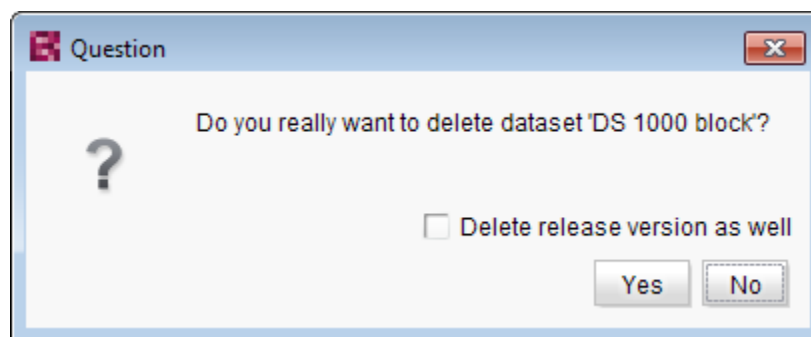
In order to sort released datasets by date of most recent release, use the newly-introduced sort criterion “Release Date”:





Sorting via the leftmost column in the “Released datasets” table is no longer possible.

Furthermore, datasets which are being deleted in the tab “Current datasets” may now be deleted from the “Released datasets” tab at the same time. This may be accomplished by checking the checkbox “Delete release version as well” in the confirmation dialog which is shown as a dataset is deleted:



For further information, see

- *Documentation for FirstSpirit SiteArchitect*, chapter “Data Store”





- *FirstSpirit Online Documentation, “Templates (basics) / Composition of templates / Database schemata”*

## 17 Overview

ID	Description	Categories
50259	<p>FirstSpirit version 5.2R3 enables sending e-mails via SMTP using authenticated connections. Authentication is configured in the configuration file <code>fs-server.conf</code>.</p> <p>Further information can be found in chapter “Administration: SMTP Authentication”.</p>	FirstSpirit Administrator, Security, ServerManager
77840	Optimized display of the bookmark drop-down list which is accessible via the bookmark button in the horizontal toolbar of SiteArchitect.	Bookmarks, SiteArchitect
138212	<p>The filter and sorting functionality for datasets has been extended in SiteArchitect. Not released datasets in the tab “Current datasets” and deleted datasets in the tab “Released datasets” can now be identified more quickly.</p> <p>Further information can be found in chapter “SiteArchitect: Extended Filter and Sorting Functionality for Datasets”.</p>	Content Store, Editor, SiteArchitect, Table templates
151536	Editing a restored section may have resulted in a malfunction.	ContentCreator
152068	Exporting a database schema including its current data could lead to erroneous behavior.	Content Store, SiteArchitect, Template Store
161145	Deleting a dataset which contains a reference to itself could lead to erroneous behavior.	Content Store, SiteArchitect
162192	<p>Using the new method <code>stopMaintenance</code> (FirstSpirit Access API, Package <code>de.espirit.firstspirit.access</code>, Interface <code>AdminService</code>), maintenance mode may be cancelled via the API.</p> <p>Further information can be found in chapter “Module Development, Scripts, API: New Method for Cancelling Maintenance Mode”.</p>	FirstSpirit API, FirstSpirit Administrator
163535	The way encrypted/protected PDF files are handled has been improved.	Indexing, Search, Security



ID	Description	Categories
164017	<p>Due to different handling of Berkeley DB V5 (“FirstSpirit Server-Manager / Project Properties / Repository / Backend”) in FirstSpirit versions 5.1 and 5.2, the repository of each project must first be configured to use Berkeley DB V3 before a downgrade from FirstSpirit version 5.2 to version 5.1 can be conducted.</p> <p>Further information can be found in chapter “Downgrade to FirstSpirit 5.1 when using Berkeley DB V5”.</p>	FirstSpirit Administrator, ServerManager
164464	When using an IBM DB2 database, modifying foreign key relationships could lead to erroneous behavior.	Content Store, Database
167578	<p>From FirstSpirit version 5.2R3 onward, individual web app components can now also be added to global web apps (BETA!).</p> <p>Further information can be found in chapter “Module development, scripts, API: Individualizing the global FirstSpirit web applications (BETA!)”.</p>	Developer, Module development, ServerManager
168157	Under certain conditions (a node has been moved and modified at the same time in the source project), nodes were not updated correctly in the target project.	Content Transport, SiteArchitect
168345	The storage behavior for archiving system files (“Archive old project states” schedule) has been optimized.	Archiving
170102	<p>In ContentCreator, the height of the input component “Link-Sensitive Graphic” (CMS_INPUT_IMAGE_MAP) can now be adjusted.</p> <p>Further information can be found in chapter “ContentCreator: Stepless Resizing of the Input Component “Link-Sensitive Graphic” (CMS_INPUT_IMAGE_MAP)”.</p>	ContentCreator, Editor, Input Components
170286	Optimized clean-up of technical sessions which were established via remote projects.	Server Administrator
171309	Optimized performance when adding elements to CorporateContent packages.	Corporate Content, FirstSpirit Administrator, ServerManager
171374	Improved handling of folders with identical names in the External Synchronization user interface.	External synchronization, SiteArchitect



ID	Description	Categories
171470	Restoring revisions resulted in a malfunction on pages if the child list had been changed by means of a previous restoration process.	Page Store, SiteArchitect
172022	If a web server has been configured incorrectly, the installation of a web application on the server is now prevented.	FirstSpirit Administrator, ServerManager
172511	In templates, optimized display of editable tables in the “Properties” tab (e.g., page templates / tab “Properties” / tab “General” / table “File extension”).	SiteArchitect, Template Development, Template Store
173605	<p>In “FirstSpirit ContentTransport”, import and export of project properties require at least project administrator privileges, import of server properties requires server administrator privileges.</p> <p>Attempting to create a feature as a standard user without the privilege levels indicated above could lead to erroneous behavior.</p>	Content Transport, Security
173725	<p>In FirstSpirit version 5.2R3, a number of new interfaces and methods for implementing personal schedule actions have been included in the FirstSpirit Developer API.</p> <p>Further information can be found in chapter “Module development, scripts, API: New interfaces and methods for implementing personal schedule actions”.</p>	Developer, FirstSpirit API, Generation, Tasks
173823	The language switching behavior for the input component FS_CATALOG has been optimized.	Input Components, SiteArchitect
174020	In the input component FS_INDEX, clicking on an invalid reference in the snippet view may have resulted in a malfunction.	Input Components, SiteArchitect
174255	The way version comments for datasets are handled has been optimized.	Content Store, SiteArchitect, Version history
174265	Deprecated the methods <code>addStartNode(IDProvider)</code> and <code>removeStartNode(IDProvider)</code> in the interface <code>Package</code> (FirstSpirit Access API, package <code>de.espirit.firstspirit.access.packagepool</code> ). These methods may be removed from the Access API with the next major FirstSpirit version (6.0).	Corporate Content, Developer, FirstSpirit API



ID	Description	Categories
	<p>Nodes may be added to and removed from a “Package” object (supplied as a parameter) by using the methods <code>addToPackage(Package)</code> and <code>removeFromPackage(Package)</code>, respectively, of the interface <code>PackagePoolItem</code> (FirstSpirit Access API, package <code>de.espirit.firstspirit.access.store</code>). All objects which may be added to a Corporate Content package implement this interface.</p>	
174304	<p>The full-text search has been improved with regard to longer search texts.</p>	Search, SiteArchitect
175252	<p>In order to comfortably perform updates of modules which include project or web application components, ServerManager provides the button “Update uses” under “Server / Properties / Modules”.</p> <p>Erroneously, not all changes were regarded after updating a module and updating uses of module components.</p>	Modules, ServerManager
175380	<p>Performance improvements in the area SiteArchitect.</p>	SiteArchitect
175841	<p>FirstSpirit version 5.2R3 introduces the new interfaces <code>OpenComparisonDialogOperation</code> and <code>OpenMergeDialogOperation</code> (both in the package <code>de.espirit.firstspirit.ui.operations</code>, FirstSpirit Developer-API).</p> <p>Further information can be found in chapter “Module Development, Scripts, API: New Interfaces to Open Version Comparison and Merge Dialogs”.</p>	Developer, FirstSpirit API, SiteArchitect
176147	<p>Optimized editing of metadata on the root node of the Site Structure store.</p>	ContentCreator, Site Store
176953	<p>In “Content Transport” functionality, installing a feature could lead to erroneous behavior if the feature contained the project property “Schedule entries”, wherein one of the schedule entries referenced an action template.</p>	Content Transport
176956	<p>In “Content Transport” functionality, optimized interaction pattern for assembly of features that should only contain project properties.</p>	Content Transport



ID	Description	Categories
177182	<p>Recalculation of references is now supported for individual elements using the new API object <code>ProjectReferencesAgent</code>.</p> <p>Further information can be found in chapter “Module Development, Scripts, API: Recalculation of references for individual elements via <code>ProjectReferencesAgent</code>”.</p>	Developer, FirstSpirit API
177323	<p>In rare cases, specific configurations of FS_REFERENCE could lead to erroneous behavior in ContentCreator: in such cases, not all elements eligible for selection were displayed.</p> <p>Further information can be found in chapter “ContentCreator: Filter in FS_REFERENCE via &lt;SOURCES&gt;”.</p>	ContentCreator, Developer, Input Components
177621	<p>In very rare instances, the defined rules (“Dynamic forms” functionality) were erroneously not taken into account in a data source.</p>	Content Store, Dynamic Forms, SiteArchitect
177836	<p>An external group may be used on a FirstSpirit server in order to assign server administrator privileges to this group (user settings, attribute “Server Administrator”). Furthermore, it is possible to prohibit the server administrator (user “Admin”) to perform editorial activities in a project (i.e. to open a project). Erroneously, this prohibition was also applied to users with server administrator privileges.</p>	Corporate Content, Editor, Permissions, Server Administrator, SiteArchitect
177904	<p>Starting a workflow on a dataset could cause the dataset to lose focus.</p>	Content Store, Workflow
177926	<p>In the input component CMS_INPUT_DOMTABLE (enableImport=“yes” option), inserting content from Microsoft Excel may have resulted in a malfunction.</p>	Clipboard, Input Components, SiteArchitect
178420	<p>It is only possible to define a group exclusion in workflows for transitions which point to an activity. From FirstSpirit version 5.2R3 onward, this definition is now also prevented in the GUI for transitions which point to a status.</p> <p>Further information can be found in chapter “SiteArchitect: 'Group exclusion' function for transitions in workflows”.</p>	Developer, Permissions, SiteArchitect, Workflow
178503	<p>Optimized scrolling and loading of entries in reports (data access plugins).</p>	Reports, SiteArchitect



ID	Description	Categories
178506	Reloading the entries in the selection dialog in the FS_INDEX input component has been optimized.	Input Components, SiteArchitect
178566	Optimized output of nested input component FS_INDEX in snippets.	Corporate Content, Input Components, SiteArchitect, Template Development
178799	When executing the method <code>delete(IDProvider, boolean)</code> (FirstSpirit Access API, package <code>de.espirit.firstspirit.access</code> , class <code>AccessUtil</code> ) on a dataset, the data source was deleted erroneously. Now, an error message is generated which states that a dataset cannot be deleted using the method above.	Content Store, Developer
178812	When importing media using “Template Wizard” functionality, the option “Parse file” will now only be activated for files of types “css” and “js”.	Media Store, Template Wizard
178861	Optimizations related to TLS encryption.	Security
178879	Weighting of content in search results may be specified per input component using the parameter <code>searchRelevancy</code> .  Further information can be found in chapter “Search: Weighting of Contents in Input Components”.	ContentCreator, Developer, Indexing, Input Components, Search, SiteArchitect, Table templates, Template Development, Template Store
178954	In the case of older Mac OS X versions (e.g., 10.7), the internal check of the operating system version in SiteArchitect may have resulted in a malfunction.	SiteArchitect
179099	For the input component FS_CATALOG, the behavior when creating a new entry and then canceling editing without saving changes has been optimized.	Input Components, SiteArchitect
179110	Creation of duplicate log directories will now be prevented.	FirstSpirit Administrator
179124	In rare cases, selecting a remote object may have resulted in a malfunction.	ContentCreator, Input Components



ID	Description	Categories
179132	Optimized search in data sources.	Content Store, Search, SiteArchitect
179200	The search performance in customer-specific reports (“ReportPlugin”) has been optimized.	ContentCreator, Reports
179283	In rare cases, searching for datasets in projects which use project archiving may have resulted in an error.	Archiving, FirstSpirit Administrator, Search
179426	In the input component FS_LIST (DATABASE type), the referenced dataset was erroneously marked as changed when an entry was added.	Input Components, SiteArchitect
179428	The global search functionality supports drag and drop of input components onto the search field. For an FS_DATASET input component referencing a certain dataset, search results now include elements which also reference that dataset.	Input Components, Search, SiteArchitect
179444	The response time when editing images in projects with many image resolutions has been improved.	Media Store, SiteArchitect
179500	Saving the configuration of an FS_CATALOG input component without a <TEMPLATES> tag caused display of a Java exception. Now, a concise error message that indicates the missing tag will be displayed.	Input Components, SiteArchitect, Template Development
179577	The process of updating the preview has been improved.	ContentCreator, Preview
179589	Optimized behavior when releasing a node which has been restored.	SiteArchitect, Workflow
179721	Erroneous behavior could occur during execution of workflow scripts.	ContentCreator, Workflow
179811	When creating a new page, the option “Hide in selection list” for the page template used was erroneously not taken into account.	ContentCreator, Template Store
180031	Canceling a workflow in ContentCreator immediately after starting it could lead to erroneous behavior.	ContentCreator, Workflow
180125 180125	In the language-independent input components FS_CATALOG and FS_LIST (INLINE type), the input components of sections are now highlighted again when checking for TRANSLATED within a rule (“dynamic forms” functionality).	ContentCreator, Dynamic Forms, Input Components



ID	Description	Categories
180217	In the input component FS_REFERENCE with a filter for data sources (<FILTER> tag with the element type CONTENT2), opening the selection dialog could lead to erroneous behavior.	Input Components, SiteArchitect
180469	Concurrent editing of a dataset by multiple users / in multiple clients could lead to erroneous behavior.	Content Store, SiteArchitect
180640	In rare cases, modifications were not handled properly in nested FS_LIST input components (type DATABASE).	Input Components, SiteArchitect
180661	Updated the integrated Chrome browser engine “JxBrowser” to version 4.9.5.  Further information can be found in chapter “Integrated Software”.	Preview, SiteArchitect
180679	When transporting project properties via external synchronization (using the API), updates were occasionally not recognized.	Developer, External synchronization, FirstSpirit API
180690 181215	Performing edits in image galleries (input component FS_LIST, type DATABASE with the tag <MEDIAMODE>) could lead to erroneous behavior.	ContentCreator, Input Components
180712	In the case of the input component FS_CATALOG, the revalidation process when modifying the options “Include this section in the output” (property INCLUDED) or “Page is completely translated to this language” (property TRANSLATED) in subforms has been optimized.	Dynamic Forms, Input Components, SiteArchitect
180715	In the case of the input components FS_CATALOG, FS_LIST (INLINE type), and CMS_INPUT_IMAGE_MAP, the revalidation process when modifying the options “Display or hide section” (property INCLUDED) or “Page is completely translated to this language” (property TRANSLATED) in subforms has been optimized.	ContentCreator, Dynamic Forms, Input Components
180825	The newly-introduced parameter <code>preview.externalDeliveryForwardHttpHeaders</code> ( <code>fs-server.conf</code> ) defines if, and which, HTTP header fields will be forwarded to the external web server, which is specified by the parameter <code>preview.externalDeliveryURL</code> .  Further information can be found in chapter “Administration: Forwarding of HTTP Header Information to an External Preview URL”.	FirstSpirit Administrator, ServerManager





ID	Description	Categories
180905	In certain cases, the output of CMS_INPUT_PERMISSION values in templates may have resulted in a malfunction.	Input Components, SiteArchitect
180923	Deleting a new dataset which had never been saved may have resulted in a malfunction.	Content Store, SiteArchitect
181029	<p>FirstSpirit-Version 5.2R3 includes a bugfix which provides extensive protection against a Java vulnerability in connection with serialization/deserialization.</p> <p>Further information can be found in chapter “Java Vulnerability (Serialization/Deserialization)”.</p>	FirstSpirit Administrator, Module development, Modules, Security
181290	Starting a FirstSpirit server could lead to erroneous behavior if the user's home directory could not be written to.	FirstSpirit Administrator
181336	When using the module “FirstSpirit Security”, the FirstSpirit Access Control Database was not created correctly in the web application directory when deploying the WAR file on an external web server (e.g., Tomcat 7).	Developer, FirstSpirit Administrator, Modules
181376	Improved output of input component FS_INDEX in metadata.	Corporate Content, Input Components, SiteArchitect, Template Development
181491 181528 181585	<p>FirstSpirit version 5.2R3 features several optimizations related to use of the FirstSpirit Launcher. This includes security improvements (use via HTTPS, use of cookies, consideration of permissions).</p> <p>Further information can be found in chapter “Administration: Optimizations related to use of the FirstSpirit Launcher”.</p>	FirstSpirit Administrator, Launcher, Security, Server Administrator, Webstart
181664	Changing a dataset using a workflow and a workflow script could lead to erroneous behavior.	Content Store, SiteArchitect, Workflow
181825	After installation of a feature in a target project, in rare cases, the order of sections within an updated page could be changed.	Content Transport, Page Store
182334	Improved user interface when creating multiple thread dumps (menu entry “FirstSpirit / Monitoring / Threads”) in FirstSpirit ServerMonitoring.	ServerMonitoring



ID	Description	Categories
182852	Optimized generation of preview URL using the method <code>getPreviewUrl(Language, TemplateSet, boolean, int, Map&lt;?, ?&gt;)</code> of the interface <code>Previewable</code> (FirstSpirit Access API, package <code>de.espirit.firstspirit.access.store</code> ).	ContentCreator, FirstSpirit API
183114	As of FirstSpirit version 5.2, Oracle JDK 1.6 has been removed from maintenance. The file <code>FIRSTspirit.jnlp</code> has been adjusted accordingly.	Server Administrator, Webstart

## 18 Categories

### 18.1 Archiving

ID	Description
168345	The storage behavior for archiving system files (“Archive old project states” schedule) has been optimized.
179283	In rare cases, searching for datasets in projects which use project archiving may have resulted in an error.

### 18.2 Bookmarks

ID	Description
77840	Optimized display of the bookmark drop-down list which is accessible via the bookmark button in the horizontal toolbar of SiteArchitect.

### 18.3 Clipboard

ID	Description
177926	In the input component <code>CMS_INPUT_DOMTABLE</code> (enableImport=“yes” option), inserting content from Microsoft Excel may have resulted in a malfunction.



## 18.4 Content Store

ID	Description
138212	<p>The filter and sorting functionality for datasets has been extended in SiteArchitect. Not released datasets in the tab “Current datasets” and deleted datasets in the tab “Released datasets” can now be identified more quickly.</p> <p>Further information can be found in chapter “SiteArchitect: Extended Filter and Sorting Functionality for Datasets”.</p>
152068	Exporting a database schema including its current data could lead to erroneous behavior.
161145	Deleting a dataset which contains a reference to itself could lead to erroneous behavior.
164464	When using an IBM DB2 database, modifying foreign key relationships could lead to erroneous behavior.
174255	The way version comments for datasets are handled has been optimized.
177621	In very rare instances, the defined rules (“Dynamic forms” functionality) were erroneously not taken into account in a data source.
177904	Starting a workflow on a dataset could cause the dataset to lose focus.
178799	When executing the method <code>delete(IDProvider, boolean)</code> (FirstSpirit Access API, package <code>de.espirit.firstspirit.access</code> , class <code>AccessUtil</code> ) on a dataset, the data source was deleted erroneously. Now, an error message is generated which states that a dataset cannot be deleted using the method above.
179132	Optimized search in data sources.
180469	Concurrent editing of a dataset by multiple users / in multiple clients could lead to erroneous behavior.
180923	Deleting a new dataset which had never been saved may have resulted in a malfunction.
181664	Changing a dataset using a workflow and a workflow script could lead to erroneous behavior.



## 18.5 Content Transport

ID	Description
168157	Under certain conditions (a node has been moved and modified at the same time in the source project), nodes were not updated correctly in the target project.
173605	In “FirstSpirit ContentTransport”, import and export of project properties require at least project administrator privileges, import of server properties requires server administrator privileges.  Attempting to create a feature as a standard user without the privilege levels indicated above could lead to erroneous behavior.
176953	In “Content Transport” functionality, installing a feature could lead to erroneous behavior if the feature contained the project property “Schedule entries”, wherein one of the schedule entries referenced an action template.
176956	In “Content Transport” functionality, optimized interaction pattern for assembly of features that should only contain project properties.
181825	After installation of a feature in a target project, in rare cases, the order of sections within an updated page could be changed.

## 18.6 ContentCreator

ID	Description
151536	Editing a restored section may have resulted in a malfunction.
170102	In ContentCreator, the height of the input component “Link-Sensitive Graphic” (CMS_INPUT_IMAGE_MAP) can now be adjusted.  Further information can be found in chapter “ContentCreator: Stepless Resizing of the Input Component “Link-Sensitive Graphic” (CMS_INPUT_IMAGE_MAP)”.
176147	Optimized editing of metadata on the root node of the Site Structure store.
177323	In rare cases, specific configurations of FS_REFERENCE could lead to erroneous behavior in ContentCreator: in such cases, not all elements eligible for selection were displayed.  Further information can be found in chapter “ContentCreator: Filter in FS_REFERENCE via <SOURCES>”.



ID	Description
178879	Weighting of content in search results may be specified per input component using the parameter <b>searchRelevancy</b> .  Further information can be found in chapter “Search: Weighting of Contents in Input Components”.
179124	In rare cases, selecting a remote object may have resulted in a malfunction.
179200	The search performance in customer-specific reports (“ReportPlugin”) has been optimized.
179577	The process of updating the preview has been improved.
179721	Erroneous behavior could occur during execution of workflow scripts.
179811	When creating a new page, the option “Hide in selection list” for the page template used was erroneously not taken into account.
180031	Canceling a workflow in ContentCreator immediately after starting it could lead to erroneous behavior.
180125 180125	In the language-independent input components FS_CATALOG and FS_LIST (INLINE type), the input components of sections are now highlighted again when checking for TRANSLATED within a rule (“dynamic forms” functionality).
180690 181215	Performing edits in image galleries (input component FS_LIST, type DATABASE with the tag <MEDIAMODE>) could lead to erroneous behavior.
180715	In the case of the input components FS_CATALOG, FS_LIST (INLINE type), and CMS_INPUT_IMAGE_MAP, the revalidation process when modifying the options “Display or hide section” (property INCLUDED) or “Page is completely translated to this language” (property TRANSLATED) in subforms has been optimized.
182852	Optimized generation of preview URL using the method <code>getPreviewUrl(Language, TemplateSet, boolean, int, Map&lt;?, ?&gt;)</code> of the interface <code>Previewable</code> (FirstSpirit Access API, package <code>de.espirit.firstspirit.access.store</code> ).

## 18.7 Corporate Content

ID	Description
171309	Optimized performance when adding elements to CorporateContent packages.
174265	Deprecated the methods <code>addStartNode(IDProvider)</code> and <code>removeStartNode(IDProvider)</code> in the interface <code>Package</code> (FirstSpirit Access API, package



ID	Description
	<p><code>de.espirit.firstspirit.access.packagepool</code>). These methods may be removed from the Access API with the next major FirstSpirit version (6.0).</p> <p>Nodes may be added to and removed from a “Package” object (supplied as a parameter) by using the methods <code>addToPackage(Package)</code> and <code>removeFromPackage(Package)</code>, respectively, of the interface <code>PackagePoolItem</code> (FirstSpirit Access API, package <code>de.espirit.firstspirit.access.store</code>). All objects which may be added to a Corporate Content package implement this interface.</p>
177836	An external group may be used on a FirstSpirit server in order to assign server administrator privileges to this group (user settings, attribute “Server Administrator”). Furthermore, it is possible to prohibit the server administrator (user “Admin”) to perform editorial activities in a project (i.e. to open a project). Erroneously, this prohibition was also applied to users with server administrator privileges.
178566	Optimized output of nested input component FS_INDEX in snippets.
181376	Improved output of input component FS_INDEX in metadata.

## 18.8 Database

ID	Description
164464	When using an IBM DB2 database, modifying foreign key relationships could lead to erroneous behavior.

## 18.9 Developer

ID	Description
167578	<p>From FirstSpirit version 5.2R3 onward, individual web app components can now also be added to global web apps (BETA!).</p> <p>Further information can be found in chapter “Module development, scripts, API: Individualizing the global FirstSpirit web applications (BETA!)”.</p>
173725	In FirstSpirit version 5.2R3, a number of new interfaces and methods for implementing personal schedule actions have been included in the FirstSpirit Developer API.



ID	Description
	Further information can be found in chapter “Module development, scripts, API: New interfaces and methods for implementing personal schedule actions”.
174265	<p>Deprecated the methods <code>addStartNode(IDProvider)</code> and <code>removeStartNode(IDProvider)</code> in the interface <code>Package</code> (FirstSpirit Access API, package <code>de.espirit.firstspirit.access.packagepool</code>). These methods may be removed from the Access API with the next major FirstSpirit version (6.0).</p> <p>Nodes may be added to and removed from a “Package” object (supplied as a parameter) by using the methods <code>addToPackage(Package)</code> and <code>removeFromPackage(Package)</code>, respectively, of the interface <code>PackagePoolItem</code> (FirstSpirit Access API, package <code>de.espirit.firstspirit.access.store</code>). All objects which may be added to a Corporate Content package implement this interface.</p>
175841	<p>FirstSpirit version 5.2R3 introduces the new interfaces <code>OpenComparisonDialogOperation</code> and <code>OpenMergeDialogOperation</code> (both in the package <code>de.espirit.firstspirit.ui.operations</code>, FirstSpirit Developer-API).</p> <p>Further information can be found in chapter “Module Development, Scripts, API: New Interfaces to Open Version Comparison and Merge Dialogs”.</p>
177182	<p>Recalculation of references is now supported for individual elements using the new API object <code>ProjectReferencesAgent</code>.</p> <p>Further information can be found in chapter “Module Development, Scripts, API: Recalculation of references for individual elements via ProjectReferencesAgent”.</p>
177323	<p>In rare cases, specific configurations of FS_REFERENCE could lead to erroneous behavior in ContentCreator: in such cases, not all elements eligible for selection were displayed.</p> <p>Further information can be found in chapter “ContentCreator: Filter in FS_REFERENCE via &lt;SOURCES&gt;”.</p>
178420	<p>It is only possible to define a group exclusion in workflows for transitions which point to an activity. From FirstSpirit version 5.2R3 onward, this definition is now also prevented in the GUI for transitions which point to a status.</p> <p>Further information can be found in chapter “SiteArchitect: 'Group exclusion' function for transitions in workflows”.</p>



ID	Description
178799	When executing the method <code>delete(IDProvider, boolean)</code> (FirstSpirit Access API, package <code>de.espirit.firstspirit.access</code> , class <code>AccessUtil</code> ) on a dataset, the data source was deleted erroneously. Now, an error message is generated which states that a dataset cannot be deleted using the method above.
178879	Weighting of content in search results may be specified per input component using the parameter <code>searchRelevancy</code> .  Further information can be found in chapter “Search: Weighting of Contents in Input Components”.
180679	When transporting project properties via external synchronization (using the API), updates were occasionally not recognized.
181336	When using the module “FirstSpirit Security”, the FirstSpirit Access Control Database was not created correctly in the web application directory when deploying the WAR file on an external web server (e.g., Tomcat 7).

## 18.10 Dynamic Forms

ID	Description
177621	In very rare instances, the defined rules (“Dynamic forms” functionality) were erroneously not taken into account in a data source.
180125 180125	In the language-independent input components FS_CATALOG and FS_LIST (INLINE type), the input components of sections are now highlighted again when checking for TRANSLATED within a rule (“dynamic forms” functionality).
180712	In the case of the input component FS_CATALOG, the revalidation process when modifying the options “Include this section in the output” (property INCLUDED) or “Page is completely translated to this language” (property TRANSLATED) in subforms has been optimized.
180715	In the case of the input components FS_CATALOG, FS_LIST (INLINE type), and CMS_INPUT_IMAGE_MAP, the revalidation process when modifying the options “Display or hide section” (property INCLUDED) or “Page is completely translated to this language” (property TRANSLATED) in subforms has been optimized.





## 18.11 Editor

ID	Description
138212	<p>The filter and sorting functionality for datasets has been extended in SiteArchitect. Not released datasets in the tab “Current datasets” and deleted datasets in the tab “Released datasets” can now be identified more quickly.</p> <p>Further information can be found in chapter “SiteArchitect: Extended Filter and Sorting Functionality for Datasets”.</p>
170102	<p>In ContentCreator, the height of the input component “Link-Sensitive Graphic” (CMS_INPUT_IMAGE_MAP) can now be adjusted.</p> <p>Further information can be found in chapter “ContentCreator: Stepless Resizing of the Input Component “Link-Sensitive Graphic” (CMS_INPUT_IMAGE_MAP)”.</p>
177836	<p>An external group may be used on a FirstSpirit server in order to assign server administrator privileges to this group (user settings, attribute “Server Administrator”). Furthermore, it is possible to prohibit the server administrator (user “Admin”) to perform editorial activities in a project (i.e. to open a project). Erroneously, this prohibition was also applied to users with server administrator privileges.</p>

## 18.12 External synchronization

ID	Description
171374	Improved handling of folders with identical names in the External Synchronization user interface.
180679	When transporting project properties via external synchronization (using the API), updates were occasionally not recognized.

## 18.13 FirstSpirit API

ID	Description
162192	Using the new method <code>stopMaintenance</code> (FirstSpirit Access API, Package <code>de.espirit.firstspirit.access</code> , Interface <code>AdminService</code> ), maintenance mode may be cancelled via the API.



ID	Description
	Further information can be found in chapter “Module Development, Scripts, API: New Method for Cancelling Maintenance Mode”.
173725	<p>In FirstSpirit version 5.2R3, a number of new interfaces and methods for implementing personal schedule actions have been included in the FirstSpirit Developer API.</p> <p>Further information can be found in chapter “Module development, scripts, API: New interfaces and methods for implementing personal schedule actions”.</p>
174265	<p>Deprecated the methods <code>addStartNode(IDProvider)</code> and <code>removeStartNode(IDProvider)</code> in the interface <code>Package</code> (FirstSpirit Access API, package <code>de.espirit.firstspirit.access.packagepool</code>). These methods may be removed from the Access API with the next major FirstSpirit version (6.0).</p> <p>Nodes may be added to and removed from a “Package” object (supplied as a parameter) by using the methods <code>addToPackage(Package)</code> and <code>removeFromPackage(Package)</code>, respectively, of the interface <code>PackagePoolItem</code> (FirstSpirit Access API, package <code>de.espirit.firstspirit.access.store</code>). All objects which may be added to a Corporate Content package implement this interface.</p>
175841	<p>FirstSpirit version 5.2R3 introduces the new interfaces <code>OpenComparisonDialogOperation</code> and <code>OpenMergeDialogOperation</code> (both in the package <code>de.espirit.firstspirit.ui.operations</code>, FirstSpirit Developer-API).</p> <p>Further information can be found in chapter “Module Development, Scripts, API: New Interfaces to Open Version Comparison and Merge Dialogs”.</p>
177182	<p>Recalculation of references is now supported for individual elements using the new API object <code>ProjectReferencesAgent</code>.</p> <p>Further information can be found in chapter “Module Development, Scripts, API: Recalculation of references for individual elements via ProjectReferencesAgent”.</p>
180679	When transporting project properties via external synchronization (using the API), updates were occasionally not recognized.
182852	Optimized generation of preview URL using the method <code>getPreviewUrl(Language, TemplateSet, boolean, int, Map&lt;?, ?&gt;)</code> of the interface <code>Previewable</code> (FirstSpirit Access API, package <code>de.espirit.firstspirit.access.store</code> ).



## 18.14 FirstSpirit Administrator

ID	Description
50259	<p>FirstSpirit version 5.2R3 enables sending e-mails via SMTP using authenticated connections. Authentication is configured in the configuration file <code>fs-server.conf</code>.</p> <p>Further information can be found in chapter “Administration: SMTP Authentication”.</p>
162192	<p>Using the new method <code>stopMaintenance</code> (FirstSpirit Access API, Package <code>de.espirit.firstspirit.access</code>, Interface <code>AdminService</code>), maintenance mode may be cancelled via the API.</p> <p>Further information can be found in chapter “Module Development, Scripts, API: New Method for Cancelling Maintenance Mode”.</p>
164017	<p>Due to different handling of Berkeley DB V5 (“FirstSpirit ServerManager / Project Properties / Repository / Backend”) in FirstSpirit versions 5.1 and 5.2, the repository of each project must first be configured to use Berkeley DB V3 before a downgrade from FirstSpirit version 5.2 to version 5.1 can be conducted.</p> <p>Further information can be found in chapter “Downgrade to FirstSpirit 5.1 when using Berkeley DB V5”.</p>
171309	Optimized performance when adding elements to CorporateContent packages.
172022	If a web server has been configured incorrectly, the installation of a web application on the server is now prevented.
179110	Creation of duplicate log directories will now be prevented.
179283	In rare cases, searching for datasets in projects which use project archiving may have resulted in an error.
180825	<p>The newly-introduced parameter <code>preview.externalDeliveryForwardHttpHeaders</code> (<code>fs-server.conf</code>) defines if, and which, HTTP header fields will be forwarded to the external web server, which is specified by the parameter <code>preview.externalDeliveryURL</code>.</p> <p>Further information can be found in chapter “Administration: Forwarding of HTTP Header Information to an External Preview URL”.</p>
181029	FirstSpirit-Version 5.2R3 includes a bugfix which provides extensive protection against a Java vulnerability in connection with serialization/deserialization.



ID	Description
	Further information can be found in chapter “Java Vulnerability (Serialization/Deserialization)”.
181290	Starting a FirstSpirit server could lead to erroneous behavior if the user's home directory could not be written to.
181336	When using the module “FirstSpirit Security”, the FirstSpirit Access Control Database was not created correctly in the web application directory when deploying the WAR file on an external web server (e.g., Tomcat 7).
181491	FirstSpirit version 5.2R3 features several optimizations related to use of the FirstSpirit Launcher.
181528	This includes security improvements (use via HTTPS, use of cookies, consideration of permissions).
181585	
	Further information can be found in chapter “Administration: Optimizations related to use of the FirstSpirit Launcher”.

## 18.15 Generation

ID	Description
173725	In FirstSpirit version 5.2R3, a number of new interfaces and methods for implementing personal schedule actions have been included in the FirstSpirit Developer API.
	Further information can be found in chapter “Module development, scripts, API: New interfaces and methods for implementing personal schedule actions”.

## 18.16 Indexing

ID	Description
163535	The way encrypted/protected PDF files are handled has been improved.
178879	Weighting of content in search results may be specified per input component using the parameter <b>searchRelevancy</b> .
	Further information can be found in chapter “Search: Weighting of Contents in Input Components”.



## 18.17 Input Components

ID	Description
170102	<p>In ContentCreator, the height of the input component “Link-Sensitive Graphic” (CMS_INPUT_IMAGE_MAP) can now be adjusted.</p> <p>Further information can be found in chapter “ContentCreator: Stepless Resizing of the Input Component “Link-Sensitive Graphic” (CMS_INPUT_IMAGE_MAP)”.</p>
173823	The language switching behavior for the input component FS_CATALOG has been optimized.
174020	In the input component FS_INDEX, clicking on an invalid reference in the snippet view may have resulted in a malfunction.
177323	<p>In rare cases, specific configurations of FS_REFERENCE could lead to erroneous behavior in ContentCreator: in such cases, not all elements eligible for selection were displayed.</p> <p>Further information can be found in chapter “ContentCreator: Filter in FS_REFERENCE via &lt;SOURCES&gt;”.</p>
177926	In the input component CMS_INPUT_DOMTABLE (enableImport=“yes” option), inserting content from Microsoft Excel may have resulted in a malfunction.
178506	Reloading the entries in the selection dialog in the FS_INDEX input component has been optimized.
178566	Optimized output of nested input component FS_INDEX in snippets.
178879	<p>Weighting of content in search results may be specified per input component using the parameter <b>searchRelevancy</b>.</p> <p>Further information can be found in chapter “Search: Weighting of Contents in Input Components”.</p>
179099	For the input component FS_CATALOG, the behavior when creating a new entry and then canceling editing without saving changes has been optimized.
179124	In rare cases, selecting a remote object may have resulted in a malfunction.
179426	In the input component FS_LIST (DATABASE type), the referenced dataset was erroneously marked as changed when an entry was added.
179428	The global search functionality supports drag and drop of input components onto the search field. For an FS_DATASET input component referencing a certain dataset, search results now include elements which also reference that dataset.



ID	Description
179500	Saving the configuration of an FS_CATALOG input component without a <TEMPLATES> tag caused display of a Java exception. Now, a concise error message that indicates the missing tag will be displayed.
180125	In the language-independent input components FS_CATALOG and FS_LIST (INLINE type), the input components of sections are now highlighted again when checking for TRANSLATED within a rule (“dynamic forms” functionality).
180217	In the input component FS_REFERENCE with a filter for data sources (<FILTER> tag with the element type CONTENT2), opening the selection dialog could lead to erroneous behavior.
180640	In rare cases, modifications were not handled properly in nested FS_LIST input components (type DATABASE).
180690	Performing edits in image galleries (input component FS_LIST, type DATABASE with the tag <MEDIAMODE>) could lead to erroneous behavior.
180712	In the case of the input component FS_CATALOG, the revalidation process when modifying the options “Include this section in the output” (property INCLUDED) or “Page is completely translated to this language” (property TRANSLATED) in subforms has been optimized.
180715	In the case of the input components FS_CATALOG, FS_LIST (INLINE type), and CMS_INPUT_IMAGE_MAP, the revalidation process when modifying the options “Display or hide section” (property INCLUDED) or “Page is completely translated to this language” (property TRANSLATED) in subforms has been optimized.
180905	In certain cases, the output of CMS_INPUT_PERMISSION values in templates may have resulted in a malfunction.
181376	Improved output of input component FS_INDEX in metadata.

## 18.18 Launcher

ID	Description
181491	FirstSpirit version 5.2R3 features several optimizations related to use of the FirstSpirit Launcher.
181528	This includes security improvements (use via HTTPS, use of cookies, consideration of permissions).
181585	Further information can be found in chapter “Administration: Optimizations related to use of the FirstSpirit Launcher”.



## 18.19 Media Store

ID	Description
178812	When importing media using “Template Wizard” functionality, the option “Parse file” will now only be activated for files of types “css” and “js”.
179444	The response time when editing images in projects with many image resolutions has been improved.

## 18.20 Module development

ID	Description
167578	<p>From FirstSpirit version 5.2R3 onward, individual web app components can now also be added to global web apps (BETA!).</p> <p>Further information can be found in chapter “Module development, scripts, API: Individualizing the global FirstSpirit web applications (BETA!)”.</p>
181029	<p>FirstSpirit-Version 5.2R3 includes a bugfix which provides extensive protection against a Java vulnerability in connection with serialization/deserialization.</p> <p>Further information can be found in chapter “Java Vulnerability (Serialization/Deserialization)”.</p>

## 18.21 Modules

ID	Description
175252	<p>In order to comfortably perform updates of modules which include project or web application components, ServerManager provides the button “Update uses” under “Server / Properties / Modules”.</p> <p>Erroneously, not all changes were regarded after updating a module and updating uses of module components.</p>
181029	FirstSpirit-Version 5.2R3 includes a bugfix which provides extensive protection against a Java vulnerability in connection with serialization/deserialization.



ID	Description
	Further information can be found in chapter “Java Vulnerability (Serialization/Deserialization)”.
181336	When using the module “FirstSpirit Security”, the FirstSpirit Access Control Database was not created correctly in the web application directory when deploying the WAR file on an external web server (e.g., Tomcat 7).

## 18.22 Page Store

ID	Description
171470	Restoring revisions resulted in a malfunction on pages if the child list had been changed by means of a previous restoration process.
181825	After installation of a feature in a target project, in rare cases, the order of sections within an updated page could be changed.

## 18.23 Permissions

ID	Description
177836	An external group may be used on a FirstSpirit server in order to assign server administrator privileges to this group (user settings, attribute “Server Administrator”). Furthermore, it is possible to prohibit the server administrator (user “Admin”) to perform editorial activities in a project (i.e. to open a project). Erroneously, this prohibition was also applied to users with server administrator privileges.
178420	<p>It is only possible to define a group exclusion in workflows for transitions which point to an activity. From FirstSpirit version 5.2R3 onward, this definition is now also prevented in the GUI for transitions which point to a status.</p> <p>Further information can be found in chapter “SiteArchitect: 'Group exclusion' function for transitions in workflows”.</p>





## 18.24 Preview

ID	Description
179577	The process of updating the preview has been improved.
180661	Updated the integrated Chrome browser engine “JxBrowser” to version 4.9.5.  Further information can be found in chapter “Integrated Software”.

## 18.25 Reports

ID	Description
178503	Optimized scrolling and loading of entries in reports (data access plug-ins).
179200	The search performance in customer-specific reports (“ReportPlugin”) has been optimized.

## 18.26 Search

ID	Description
163535	The way encrypted/protected PDF files are handled has been improved.
174304	The full-text search has been improved with regard to longer search texts.
178879	Weighting of content in search results may be specified per input component using the parameter <b>searchRelevancy</b> .  Further information can be found in chapter “Search: Weighting of Contents in Input Components”.
179132	Optimized search in data sources.
179283	In rare cases, searching for datasets in projects which use project archiving may have resulted in an error.
179428	The global search functionality supports drag and drop of input components onto the search field. For an FS_DATASET input component referencing a certain dataset, search results now include elements which also reference that dataset.



## 18.27 Security

ID	Description
50259	FirstSpirit version 5.2R3 enables sending e-mails via SMTP using authenticated connections. Authentication is configured in the configuration file <code>fs-server.conf</code> .  Further information can be found in chapter “Administration: SMTP Authentication”.
163535	The way encrypted/protected PDF files are handled has been improved.
173605	In “FirstSpirit ContentTransport”, import and export of project properties require at least project administrator privileges, import of server properties requires server administrator privileges.  Attempting to create a feature as a standard user without the privilege levels indicated above could lead to erroneous behavior.
178861	Optimizations related to TLS encryption.
181029	FirstSpirit-Version 5.2R3 includes a bugfix which provides extensive protection against a Java vulnerability in connection with serialization/deserialization.  Further information can be found in chapter “Java Vulnerability (Serialization/Deserialization)”.
181491	FirstSpirit version 5.2R3 features several optimizations related to use of the FirstSpirit Launcher.
181528 181585	This includes security improvements (use via HTTPS, use of cookies, consideration of permissions).  Further information can be found in chapter “Administration: Optimizations related to use of the FirstSpirit Launcher”.

## 18.28 Server Administrator

ID	Description
170286	Optimized clean-up of technical sessions which were established via remote projects.
177836	An external group may be used on a FirstSpirit server in order to assign server administrator privileges to this group (user settings, attribute “Server Administrator”). Furthermore, it is possible to prohibit the server administrator (user “Admin”) to perform editorial activities in a project (i.e. to open a project). Erroneously, this prohibition was also applied to users with server administrator privileges.



ID	Description
181491	FirstSpirit version 5.2R3 features several optimizations related to use of the FirstSpirit Launcher.
181528 181585	This includes security improvements (use via HTTPS, use of cookies, consideration of permissions).  Further information can be found in chapter “Administration: Optimizations related to use of the FirstSpirit Launcher”.
183114	As of FirstSpirit version 5.2, Oracle JDK 1.6 has been removed from maintenance. The file <i>FIRSTspirit.jnlp</i> has been adjusted accordingly.

## 18.29 ServerManager

ID	Description
50259	FirstSpirit version 5.2R3 enables sending e-mails via SMTP using authenticated connections. Authentication is configured in the configuration file <code>fs-server.conf</code> .  Further information can be found in chapter “Administration: SMTP Authentication”.
164017	Due to different handling of Berkeley DB V5 (“FirstSpirit ServerManager / Project Properties / Repository / Backend”) in FirstSpirit versions 5.1 and 5.2, the repository of each project must first be configured to use Berkeley DB V3 before a downgrade from FirstSpirit version 5.2 to version 5.1 can be conducted.  Further information can be found in chapter “Downgrade to FirstSpirit 5.1 when using Berkeley DB V5”.
167578	From FirstSpirit version 5.2R3 onward, individual web app components can now also be added to global web apps (BETA!).  Further information can be found in chapter “Module development, scripts, API: Individualizing the global FirstSpirit web applications (BETA!)”.
171309	Optimized performance when adding elements to CorporateContent packages.
172022	If a web server has been configured incorrectly, the installation of a web application on the server is now prevented.



ID	Description
175252	<p>In order to comfortably perform updates of modules which include project or web application components, ServerManager provides the button “Update uses” under “Server / Properties / Modules”.</p> <p>Erroneously, not all changes were regarded after updating a module and updating uses of module components.</p>
180825	<p>The newly-introduced parameter <code>preview.externalDeliveryForwardHttpHeaders</code> (<code>fs-server.conf</code>) defines if, and which, HTTP header fields will be forwarded to the external web server, which is specified by the parameter <code>preview.externalDeliveryURL</code>.</p> <p>Further information can be found in chapter “Administration: Forwarding of HTTP Header Information to an External Preview URL”.</p>

### 18.30 ServerMonitoring

ID	Description
182334	Improved user interface when creating multiple thread dumps (menu entry “FirstSpirit / Monitoring / Threads”) in FirstSpirit ServerMonitoring.

### 18.31 Site Store

ID	Description
176147	Optimized editing of metadata on the root node of the Site Structure store.

### 18.32 SiteArchitect

ID	Description
77840	Optimized display of the bookmark drop-down list which is accessible via the bookmark button in the horizontal toolbar of SiteArchitect.



ID	Description
138212	<p>The filter and sorting functionality for datasets has been extended in SiteArchitect. Not released datasets in the tab “Current datasets” and deleted datasets in the tab “Released datasets” can now be identified more quickly.</p> <p>Further information can be found in chapter “SiteArchitect: Extended Filter and Sorting Functionality for Datasets”.</p>
152068	Exporting a database schema including its current data could lead to erroneous behavior.
161145	Deleting a dataset which contains a reference to itself could lead to erroneous behavior.
168157	Under certain conditions (a node has been moved and modified at the same time in the source project), nodes were not updated correctly in the target project.
171374	Improved handling of folders with identical names in the External Synchronization user interface.
171470	Restoring revisions resulted in a malfunction on pages if the child list had been changed by means of a previous restoration process.
172511	In templates, optimized display of editable tables in the “Properties” tab (e.g., page templates / tab “Properties” / tab “General” / table “File extension”).
173823	The language switching behavior for the input component FS_CATALOG has been optimized.
174020	In the input component FS_INDEX, clicking on an invalid reference in the snippet view may have resulted in a malfunction.
174255	The way version comments for datasets are handled has been optimized.
174304	The full-text search has been improved with regard to longer search texts.
175380	Performance improvements in the area SiteArchitect.
175841	<p>FirstSpirit version 5.2R3 introduces the new interfaces <code>OpenComparisonDialogOperation</code> and <code>OpenMergeDialogOperation</code> (both in the package <code>de.espirit.firstspirit.ui.operations</code>, FirstSpirit Developer-API).</p> <p>Further information can be found in chapter “Module Development, Scripts, API: New Interfaces to Open Version Comparison and Merge Dialogs”.</p>
177621	In very rare instances, the defined rules (“Dynamic forms” functionality) were erroneously not taken into account in a data source.
177836	An external group may be used on a FirstSpirit server in order to assign server administrator privileges to this group (user settings, attribute “Server Administrator”). Furthermore, it is possible to



ID	Description
	prohibit the server administrator (user “Admin”) to perform editorial activities in a project (i.e. to open a project). Erroneously, this prohibition was also applied to users with server administrator privileges.
177926	In the input component CMS_INPUT_DOMTABLE (enableImport=“yes” option), inserting content from Microsoft Excel may have resulted in a malfunction.
178420	<p>It is only possible to define a group exclusion in workflows for transitions which point to an activity. From FirstSpirit version 5.2R3 onward, this definition is now also prevented in the GUI for transitions which point to a status.</p> <p>Further information can be found in chapter “SiteArchitect: 'Group exclusion' function for transitions in workflows”.</p>
178503	Optimized scrolling and loading of entries in reports (data access plug-ins).
178506	Reloading the entries in the selection dialog in the FS_INDEX input component has been optimized.
178566	Optimized output of nested input component FS_INDEX in snippets.
178879	<p>Weighting of content in search results may be specified per input component using the parameter <b>searchRelevancy</b>.</p> <p>Further information can be found in chapter “Search: Weighting of Contents in Input Components”.</p>
178954	In the case of older Mac OS X versions (e.g., 10.7), the internal check of the operating system version in SiteArchitect may have resulted in a malfunction.
179099	For the input component FS_CATALOG, the behavior when creating a new entry and then canceling editing without saving changes has been optimized.
179132	Optimized search in data sources.
179426	In the input component FS_LIST (DATABASE type), the referenced dataset was erroneously marked as changed when an entry was added.
179428	The global search functionality supports drag and drop of input components onto the search field. For an FS_DATASET input component referencing a certain dataset, search results now include elements which also reference that dataset.
179444	The response time when editing images in projects with many image resolutions has been improved.



ID	Description
179500	Saving the configuration of an FS_CATALOG input component without a <TEMPLATES> tag caused display of a Java exception. Now, a concise error message that indicates the missing tag will be displayed.
179589	Optimized behavior when releasing a node which has been restored.
180217	In the input component FS_REFERENCE with a filter for data sources (<FILTER> tag with the element type CONTENT2), opening the selection dialog could lead to erroneous behavior.
180469	Concurrent editing of a dataset by multiple users / in multiple clients could lead to erroneous behavior.
180640	In rare cases, modifications were not handled properly in nested FS_LIST input components (type DATABASE).
180661	Updated the integrated Chrome browser engine “JxBrowser” to version 4.9.5.  Further information can be found in chapter “Integrated Software”.
180712	In the case of the input component FS_CATALOG, the revalidation process when modifying the options “Include this section in the output” (property INCLUDED) or “Page is completely translated to this language” (property TRANSLATED) in subforms has been optimized.
180905	In certain cases, the output of CMS_INPUT_PERMISSION values in templates may have resulted in a malfunction.
180923	Deleting a new dataset which had never been saved may have resulted in a malfunction.
181376	Improved output of input component FS_INDEX in metadata.
181664	Changing a dataset using a workflow and a workflow script could lead to erroneous behavior.

### 18.33 Table templates

ID	Description
138212	The filter and sorting functionality for datasets has been extended in SiteArchitect. Not released datasets in the tab “Current datasets” and deleted datasets in the tab “Released datasets” can now be identified more quickly.  Further information can be found in chapter “SiteArchitect: Extended Filter and Sorting Functionality for Datasets”.



ID	Description
178879	Weighting of content in search results may be specified per input component using the parameter <b>searchRelevancy</b> .  Further information can be found in chapter “Search: Weighting of Contents in Input Components”.

## 18.34 Tasks

ID	Description
173725	In FirstSpirit version 5.2R3, a number of new interfaces and methods for implementing personal schedule actions have been included in the FirstSpirit Developer API.  Further information can be found in chapter “Module development, scripts, API: New interfaces and methods for implementing personal schedule actions”.

## 18.35 Template Development

ID	Description
172511	In templates, optimized display of editable tables in the “Properties” tab (e.g., page templates / tab “Properties” / tab “General” / table “File extension”).
178566	Optimized output of nested input component FS_INDEX in snippets.
178879	Weighting of content in search results may be specified per input component using the parameter <b>searchRelevancy</b> .  Further information can be found in chapter “Search: Weighting of Contents in Input Components”.
179500	Saving the configuration of an FS_CATALOG input component without a <b>&lt;TEMPLATES&gt;</b> tag caused display of a Java exception. Now, a concise error message that indicates the missing tag will be displayed.
181376	Improved output of input component FS_INDEX in metadata.





## 18.36 Template Store

ID	Description
152068	Exporting a database schema including its current data could lead to erroneous behavior.
172511	In templates, optimized display of editable tables in the “Properties” tab (e.g., page templates / tab “Properties” / tab “General” / table “File extension”).
178879	Weighting of content in search results may be specified per input component using the parameter <code>searchRelevancy</code> .  Further information can be found in chapter “Search: Weighting of Contents in Input Components”.
179811	When creating a new page, the option “Hide in selection list” for the page template used was erroneously not taken into account.

## 18.37 Template Wizard

ID	Description
178812	When importing media using “Template Wizard” functionality, the option “Parse file” will now only be activated for files of types “css” and “js”.

## 18.38 Version history

ID	Description
174255	The way version comments for datasets are handled has been optimized.

## 18.39 Webstart

ID	Description
181491	FirstSpirit version 5.2R3 features several optimizations related to use of the FirstSpirit Launcher.
181528	This includes security improvements (use via HTTPS, use of cookies, consideration of permissions).
181585	



ID	Description
	Further information can be found in chapter “Administration: Optimizations related to use of the FirstSpirit Launcher”.
183114	As of FirstSpirit version 5.2, Oracle JDK 1.6 has been removed from maintenance. The file <i>FIRSTspirit.jnlp</i> has been adjusted accordingly.

## 18.40 Workflow

ID	Description
177904	Starting a workflow on a dataset could cause the dataset to lose focus.
178420	<p>It is only possible to define a group exclusion in workflows for transitions which point to an activity. From FirstSpirit version 5.2R3 onward, this definition is now also prevented in the GUI for transitions which point to a status.</p> <p>Further information can be found in chapter “SiteArchitect: 'Group exclusion' function for transitions in workflows”.</p>
179589	Optimized behavior when releasing a node which has been restored.
179721	Erroneous behavior could occur during execution of workflow scripts.
180031	Canceling a workflow in ContentCreator immediately after starting it could lead to erroneous behavior.
181664	Changing a dataset using a workflow and a workflow script could lead to erroneous behavior.

